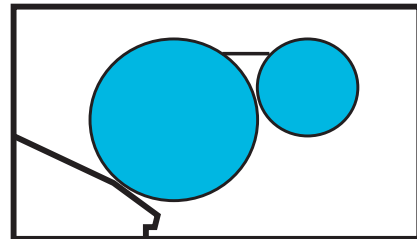


Date of Installation : _____

Unit Serial Number : _____

Kompac Dealer : _____

VARN
Kompac[®]



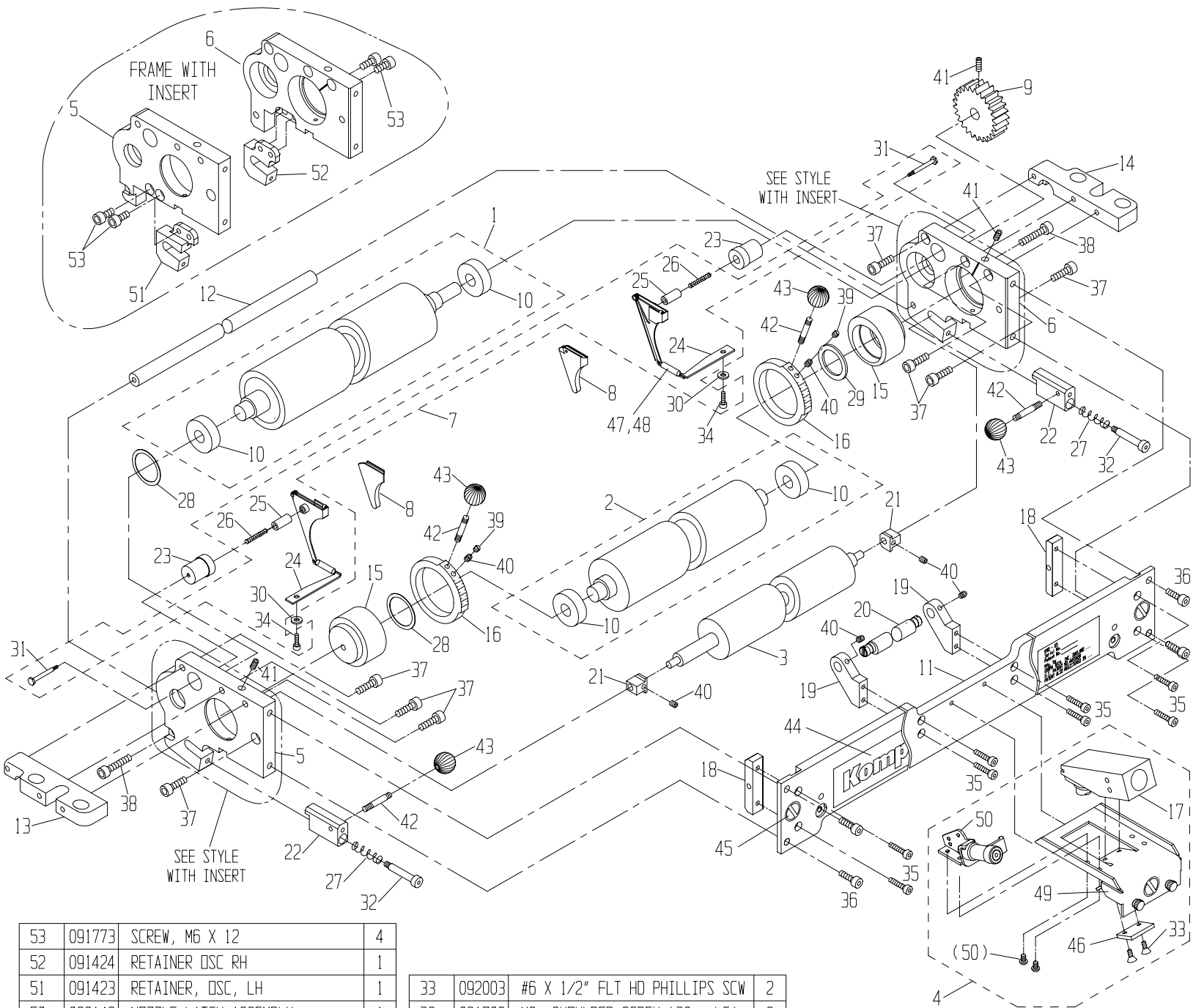
MODEL : KMO - 65

PARTS CATALOG # 98592 REV.N

KMD-65 PARTS CATALOG

P/N 098592

REV	DESCRIPTION	ECN	BY	DATE
-	PRODUCTION RELEASE	-	JWJ	11/17/95
A	REF. ECN 1158	1158	JWJ	12/12/95
B	UNDER BRKT KIT AND SUBASSYS: CHG ITEM 14 FROM 091944 TO 091888, ADD TWO (2) ITEM 14's TO ASSY 098570, CHG BRKT KIT ITEM 19 FROM 091624 TO 091547	1168	JWJ	3/14/96
C	ADD NOZZLE LATCH ASSEMBLY 098148 TO THE NOZZLE BRACKET ASSEMBLY 098650	1198	JWJ	6/19/96
D	ADDED (2) NEEDLE BEARINGS (P/N 098151) TO KMD BRACKET PARTS (P/N 098122)	1213	MJC	8-6-96
E	CHG PIVOT BUSHING, 098028, M5 HOLD DOWN SCREWS FROM 091761 TO 091773. ADD 091773. CHG BLANKING PLUG, 098012, M5 HOLD DOWN SCREWS FROM 091726 TO 091527. CHG REMOTE BOTTLE BRKT, 098065, M8 HOLD DOWN SCREWS FROM 091756 TO 091603.	1238	JWJ	11/21/96
F	CHANGE UNIT, 098082, ITEM 27 FROM 095698 TO 092007.	1240	JWJ	12/3/96
G	REMOVE LOCKOUT ASSY FROM BASE BRACKET KIT AND MAKE AN OPTION (ITEM 83), ADD ITEM 84,85 & (1) MORE ITEM 31 & 45, REPLACE 098021 WITH 098155(OSC.).	1279	CV	5-2-97
H	REVISED LOCKOUT TO NEW STYLE	1307	CV	8-5-97
I	ADDED KIT #4, P/N 098182, PAGE 10	1331	MJC	10-10-97
J	CHANGE METERING ROLLER FROM 098640 TO 098186 (CROWNED)	1397	B.W.	5/4/98
K	CHANGED OSCILLATOR FROM 098155 TO 095717, OSCILLATOR PAGE ADDED	1516	Z.Z.	5-4-99
L	ADDED ITEMS 51-53	1548	CRC	08-17-99
M	OSCILLATING ROLLER UPDATED AS PER ECN 1545	1575	M.K.	04/03/00
N	OSC. SHEET: OSC. WAS 095717, ITEM #10 WAS 95769, ITEM #5 WAS 095776 AND ITEM #6 WAS 095749. REMOVED ITEM #14 (092106, QTY 2).	1633	MJC	9-28-00



53	091773	SCREW, M6 X 12	4
52	091424	RETAINER DSC RH	1
51	091423	RETAINER, DSC, LH	1
50	098148	NOZZLE LATCH ASSEMBLY	1
49	098022	BRACKET, NOZZLE	1
48	092259	SPRING COVER	2
47	092236	TAB SPRING	2
46	098064	SPACER, NOZZLE BRACKET	1
45	092601	SAFETY STICKER (INWARD NIP)	3
44	098026	LABELS, TIE PLATE	1
43	092055	BALL KNOB (10-32)	4
42	091417	THREADED STUD, SHRT (M5/10-32)	4
41	091889	M5 x .8 x 10mm SET SCREW	3
40	091888	M5 x .8 x 5mm SET SCREW	6
39	091909	M5 x 4mm SLOTTED SET SCREW	2
38	091786	SCREW, M6 x 25mm, CAP	2
37	091761	M6 x 1 x 18mm CAP SCREW	8
36	091785	SCREW, M6 x 14mm, CAP	4
35	091891	M5 x 16mm CAP SCREW	8
34	091760	M4 x 0.7 x 10mm CAP SCREW	*
ITEM#	PART#	DESCRIPTION	QTY

33	092003	#6 X 1/2" FLT HD PHILLIPS SCW	2
32	091708	M6 SHOULDER SCREW (30mm LG)	2
31	092303	SEAL PLATE SHOULDER SCREW	*
30	091981	M4 FLAT WASHER	2
29	091784	WASHER, 1.353x.988x.078	1
28	091783	WASHER, WAVE, 35mm	2
27	092007	SPRING, COMPRESSION	2
26	092242	COMPRESSION SPRING (BKG PLATE)	*
25	092304	GUIDE PIN	*
24	091406	SPRING PLATE	*
23	091407	BACKING PLATE STANDOFF	2
22	095697	CLAMP, OSCILLATOR	2
21	092174	METRIC ALIGNMENT BLOCK	2
20	098007	ECCENTRIC, BRKT, NOZZLE, UNIT	1
19	098008	ECCENTRIC BRACKET, NOZZLE BKT	2
18	098009	BLOCK, ADJUSTMENT, TIE PLATE	2
17	092700	NOZZLE ASSEMBLY	1
16	098025	GAUGE, METERING, 35mm BEARING	2
ITEM#	PART#	DESCRIPTION	QTY

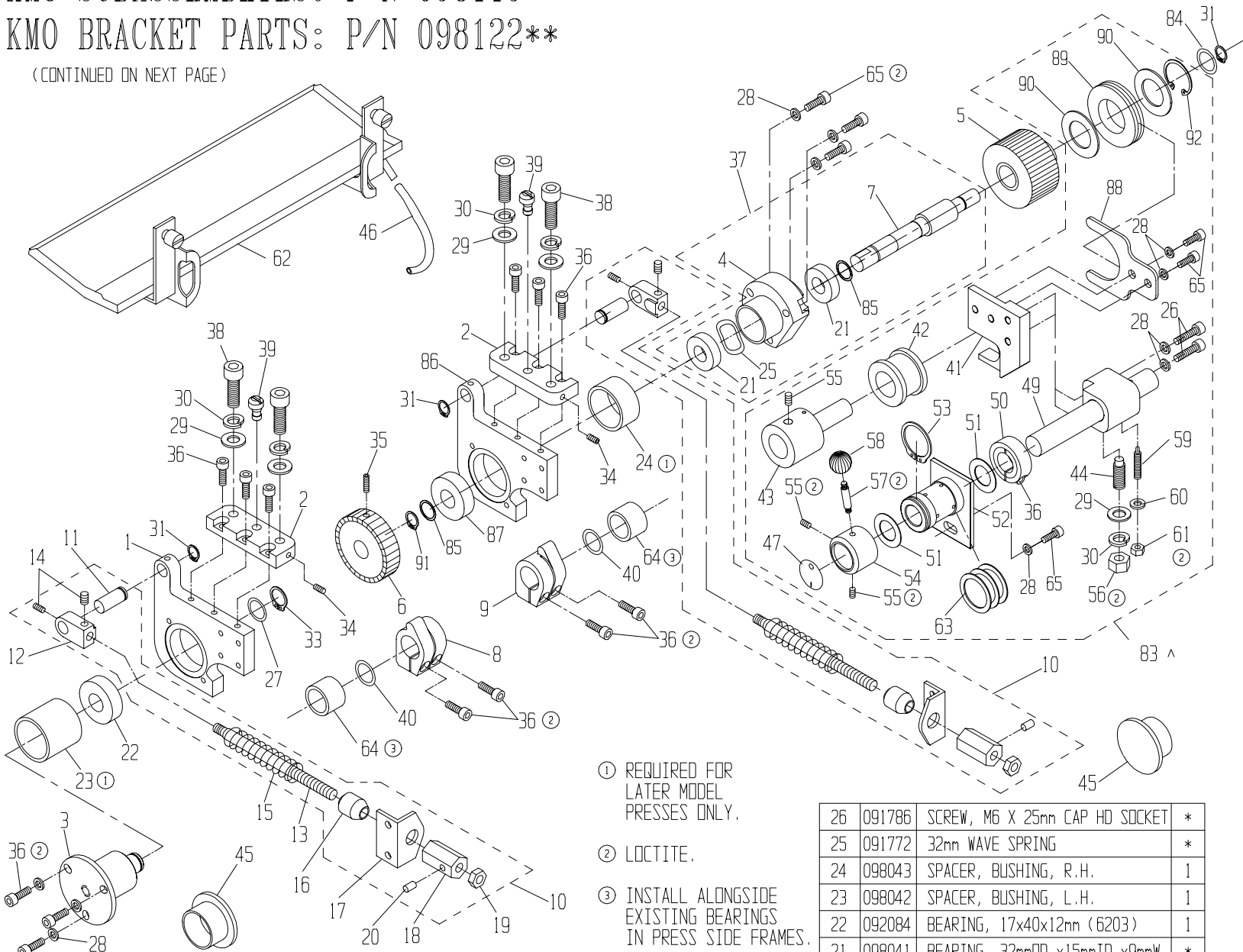
15	098024	ECCENTRIC, M/R, 35mm BEARING	2
14	098005	BRACKET, ATTACHMENT, UNIT, RH	1
13	098006	BRACKET, ATTACHMENT, UNIT, LH	1
12	098004	TIE ROD, UNIT	1
11	098003	TIE PLATE	1
10	092083	BEARING, 15x35x11mm (6202)	*
9	098023	GEAR, UNIT	1
8	090850	R.H. & L.H. SEAL SET	1
7	091450	SEAL BACKING PLATE KIT (L & R)	1
6	098001	SIDEFRAME, UNIT, R.H.	1
5	098002	SIDEFRAME, UNIT, L.H.	1
4	098650	ASSY, NOZZLE BRACKET	1
3	098155	OSCILLATOR, 65cn	1
2	098186	ASSY, METERING ROLLER 65/C	1
1	098630	ASSY, FORM ROLLER	1
ITEM#	PART#	DESCRIPTION	QTY

* PART IS INCLUDED WITH OUTLINED SUBASSEMBLY. ** ITEMS 3, 4, AND 21 NOT INCLUDED WITH THIS P/N.

KMO SUBASSEMBLIES: P/N 098119**
 KMO BRACKET PARTS: P/N 098122**

PARTS CATALOG P/N 098592 REV.N

(CONTINUED ON NEXT PAGE)



- ① REQUIRED FOR LATER MODEL PRESSES ONLY.
- ② LOCTITE.
- ③ INSTALL ALONGSIDE EXISTING BEARINGS IN PRESS SIDE FRAMES.

ITEM	PART#	DESCRIPTION	QTY
65	091773	M6 x 1.0 x 12mm CAP SCREW	6
64	098151	BEARING, NEEDLE, 22IDx28ODx20W	2
63	091631	SHIM, $\phi 1.495 \times \phi 1.260 \times .010$	*
62	098121	PAN, DRIP	1
61	091733	NUT, M8x1.25, HEX JAM	†
60	091950	FLAT WASHER (M8)	*
59	091899	PLUNGER, BALL, M8 x 16mm	*
58	092055	BALL KNOB	*
57	095639	STEM, LEVER	*
56	091750	NUT, M10, HEX	*
55	091700	M6 x 1.0 x 6mm SET SCREW	*
54	098115	ON/OFF HANDLE BASE	*
53	091702	RETAINING RING, 32mm, EXTERNAL	*
52	098168	COLLAR ASSY, LOCKOUT	*
51	091727	SHIM, 1.125 x .751 x .031	*
50	098109	COLLAR, $\phi .75$ I.D., M6 SCREW	*
49	098113	SHAFT, ON/OFF LOCKOUT	*
48	098111	BASE, ARM	*
47	098123	LABEL, ON/OFF	*

46	098011	CLEAR PLASTIC HOSE, 3/8" ID	1
45	098128	PLUG, $\phi 1-1/4$, DOME	2
44	092006	SCREW, SET, M10, FULL DCG	*
43	098167	BASE, GUIDE, THROWOUT	*
42	098166	BUSHING, THROWOUT	*
41	098165	ARM, FORK	*
40	091729	SHIM, 1.313x.874x.020	2
39	091511	KIII ADJUSTMENT ECCENTRIC	2
38	091629	SCREW, M10x30mm SOCKET HD CAP	4
37	098660	ASSY, PIVOT BUSHING, R.H.	1
36	091761	M6 x 1.0 x 18mm CAP SCREW	13
35	091904	M5 x .8 x 16mm SET SCREW	1
34	091889	M5 x .8 x 10mm SET SCREW	2*
33	091628	RETAINING RING, 17mm, EXTERNAL	1
32	091627	RETAINING RING, 14mm, EXTERNAL	*
31	091662	$\phi 12$ mm RETAINING RING	3
30	091741	M10 SPLIT LOCK WASHER	4*
29	091976	M10 FLAT WASHER	4*
28	091743	WASHER, SMALL O.D., M6	6*
27	091626	WASHER, $\phi .871 \times \phi .673 \times .02$	1

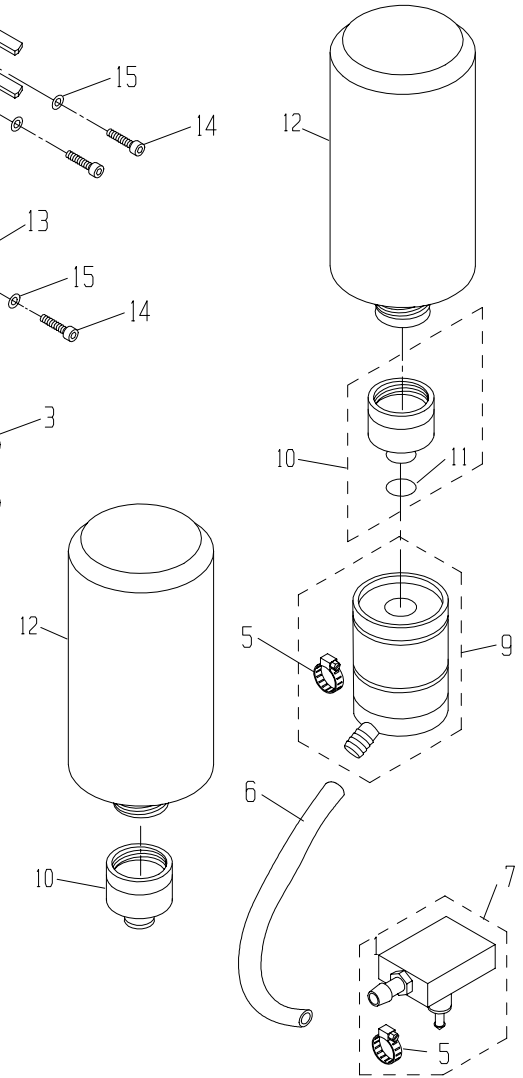
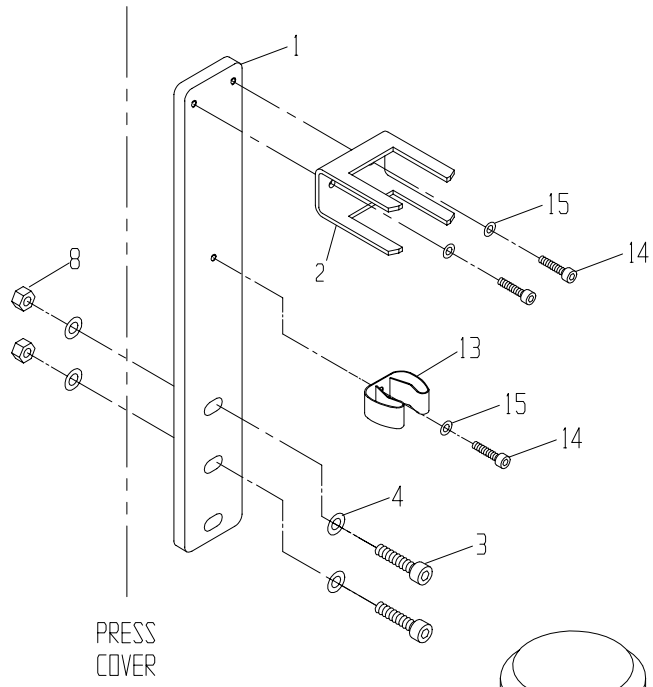
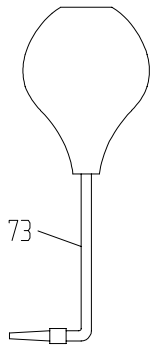
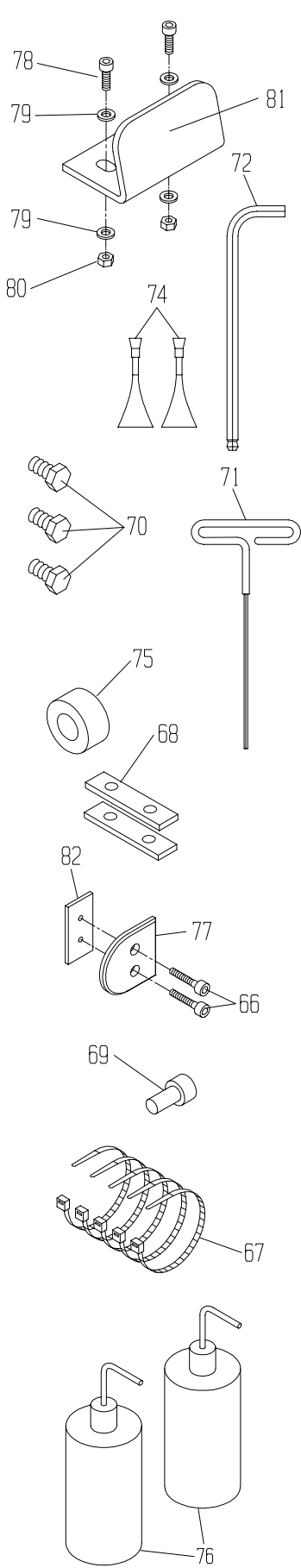
26	091786	SCREW, M6 X 25mm CAP HD SOCKET	*
25	091772	32mm WAVE SPRING	*
24	098043	SPACER, BUSHING, R.H.	1
23	098042	SPACER, BUSHING, L.H.	1
22	092084	BEARING, 17x40x12mm (6203)	1
21	098041	BEARING, 32mmOD x15mmID x9mmW	*
20	091546	SET SCREW, NYLON, M4 X 6	*
19	091547	NUT, HEX JAM, 3/8-24, SPECIAL	*
18	098038	NUT, ADJUSTMENT	*
17	098037	BRACKET, SPRING, ON/OFF	*
16	098036	COLLAR, SPRING	*
15	098066	SPRING, COMPRESSION	*
14	091888	M5 X .8 X 5mm SET SCREW	*
13	098035	ROD, SPRING	*
12	098034	UNION, PIVOT	*
11	098033	DOWEL, PIVOT	*
10	098570	ASSY, ON/OFF SPRING BRACKET	2
9	098014	LEVER, ON/OFF, R.H.	1
8	098013	LEVER, ON/OFF, L.H.	1
7	098176	SHAFT, UNIT DRIVE LOCKOUT, LRG CLUT.	1
6	098172	GEAR, DRIVE, LARGE BEARING	1
5	098173	ASSY, GEAR, LOCKOUT, LRG CLUT.	1
4	098158	PIVOT BUSHING, UNIT BKT, R.H.	*
3	098027	PIVOT BUSHING, UNIT BKT, L.H.	1
2	098016	BRACKET, ATTACH FLANGE, UNIT	2
1	098015	BRACKET, UNIT	1

* PART IS INCLUDED WITH OUTLINED SUBASSEMBLY. ** ITEMS 62,73,& 76 NOT INCLUDED WITH THIS P/N.

^ ITEM 83 (LOCKOUT ASSY) IS NOT PART OF BASE BRACKET KIT BUT IS AVAILABLE AS AN OPTION.

KMO BRACKET PARTS:
P/N 098122 (CONT.)**

KMO REMOTE BOTTLE
PARTS: P/N 098118***



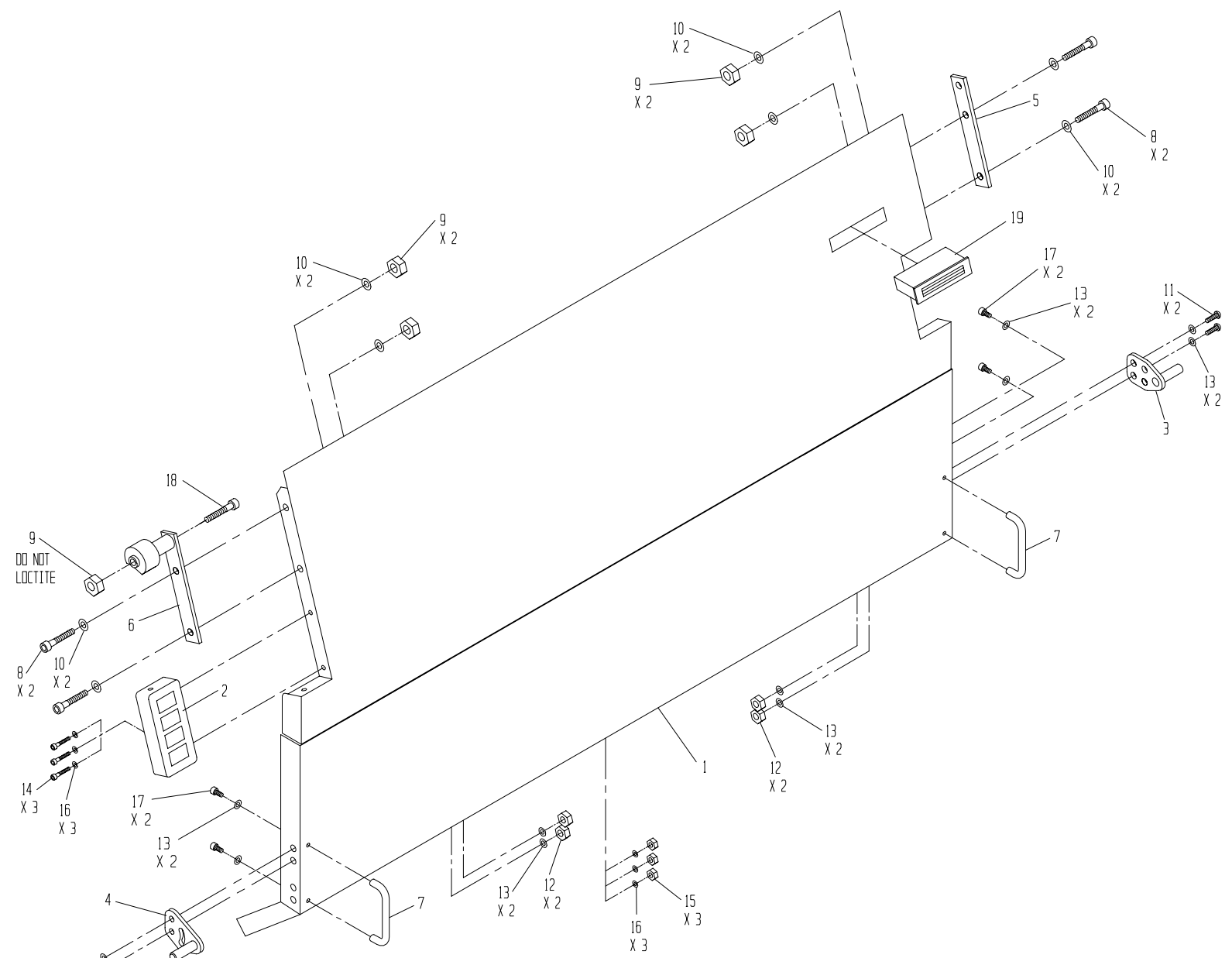
92	091660	RETAINING RING, ϕ 1.0	*
91	091993	RETAINING RING, 15mm, EXTERNAL	1
90	091746	WASHER	*
89	098402	FORK, DRIVE GEAR, BUSHING	*
88	098164	FORK, LOCKOUT	*
87	098163	BEARING, 15 X 42 X 13, 6302	1
86	098159	UNIT BRACKET, LRG BEARING	1
85	092019	SPACER, .906 X .603 X .02	1*
84	091966	.8780D X .478 ID SPACER	1
83	098116	ASSY, LOCKOUT	^
82	098055	PLATE, BACKING, PLUG	1
81	098131	PLATE, STRIKE, KMO	1
80	091752	M5 NUT	2
79	091978	M5 FLAT WASHER	4
78	091789	SCREW, M5 X 25mm SDC HD CAP	2
77	098012	PLUG, BLANKING	1
76	092774	LONG NECK WASH-UP BOTTLE	2
75	091538	SPACER, INK DUCTOR CRANK ARM	1
74	092061	LOCTITE, 5 ml	2
73	092779	ASSY, SYRINGE, LONG NECK	1
72	090758	8mm BALL END ALLEN WRENCH	1
71	090756	2.5mm T-WRENCH	1
70	091655	M8 X 1.0 X 10mm HEX HD BOLT	3
69	098058	PIN, AUTO LATCH	1
68	098057	SPACER, LATCH	2
67	092053	NYLON CABLE TIE	5
66	091527	M5 x 30mm CAP SCREW	2
(CONTINUED FROM LAST PAGE)			
ITEM#	PART#	DESCRIPTION	QTY

15	091978	M5 FLAT WASHER	3
14	091765	M5x.8x12mm BUTTON HD CP SCREW	3
13	091672	SPRING CLIP	1
12	092772	BOTTLE, CALIBRATED 1/2 GAL	2
11	092765	O-RING	*
10	092760	DISPENSING VALVE ASSEMBLY	2
9	092740	BOTTLE VALVE ASSEMBLY	1
8	091754	M8 NUT, SELF-LOCKING	2
7	092750	ADAPTER BASE ASSY	1
6	092756	1/2" I.D. VINYL TUBING	1
5	091911	CLAMP, ADJUSTABLE 1/4"-25/32"	*
4	091950	FLAT WASHER (M8)	4
3	091603	M8 x 45mm CAP SCREW	2
2	092749	BRACKET, BOTTLE, UNIVERSAL	1
1	098065	BRACKET, REMOTE BOTTLE	1
ITEM#	PART#	DESCRIPTION	QTY

** ITEMS 62,73,& 76 NOT INCLUDED WITH THIS P/N.

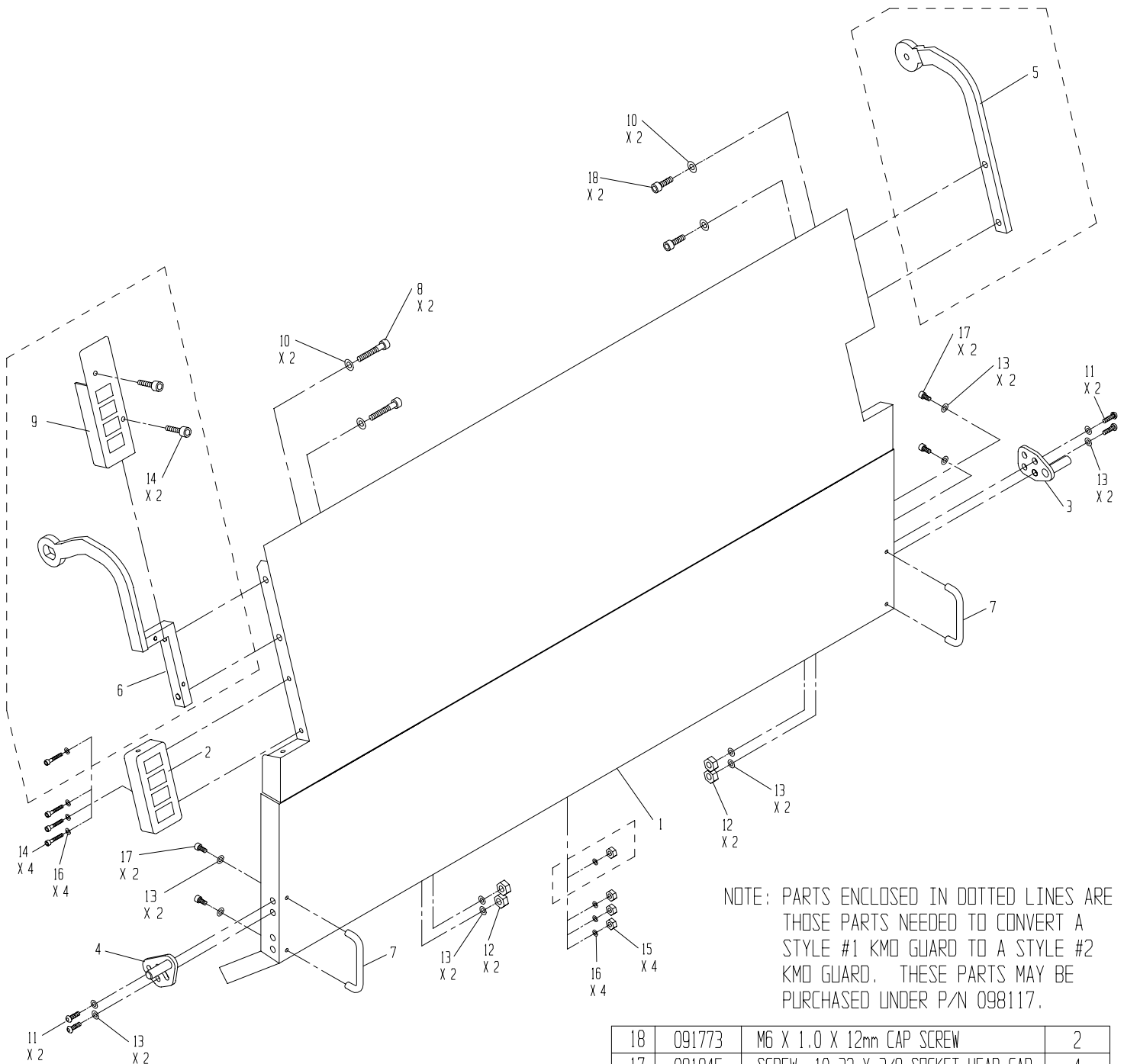
^ ITEM 83 (LOCKOUT ASSY) IS NOT PART OF BASE BRACKET KIT BUT IS AVAILABLE AS AN OPTION

* PART IS INCLUDED WITH OUTLINED SUBASSEMBLY.
*** ITEMS 1,10,11&12 NOT INCLUDED WITH THIS P/N.



19	098129	CATCH, MAGNETIC, SNAP-IN, 2.25 IN.	1
18	091791	M6 X 65mm CAP SCREW	1
17	091845	SCREW, 10-32 X 3/8 SOCKET HEAD CAP	4
16	091981	M4 FLAT WASHER	6
15	091936	M4 HEX NUT, FULL	3
14	091760	M4 X .7 X 10mm CAP SCREW	3
13	091978	M5 FLAT WASHER	12
12	091752	M5 X .8 HEX NUT	4
11	091765	M5 X .8 X 12mm BUTTON HD CP SCREW	4
10	091743	WASHER, SMALL D.D., M6	8
9	091753	M6 HEX NUT	5
8	091761	M6 X 1.0 X 18mm CAP SCREW	4
7	092077	HANDLE, PULL	2
6	098101	BAR, STYLE-1 OP PIVOT	1
5	098099	BAR, STYLE-1 NDP PIVOT	1
4	098103	STOP, OP GUARD	1
3	098102	STOP, NDP GUARD	1
2	098097	COVER, HOSE HOLE	1
1	098048	GUARD, SAFETY, KMO	1

ITEM	PART NO.	DESCRIPTION	QTY.
------	----------	-------------	------



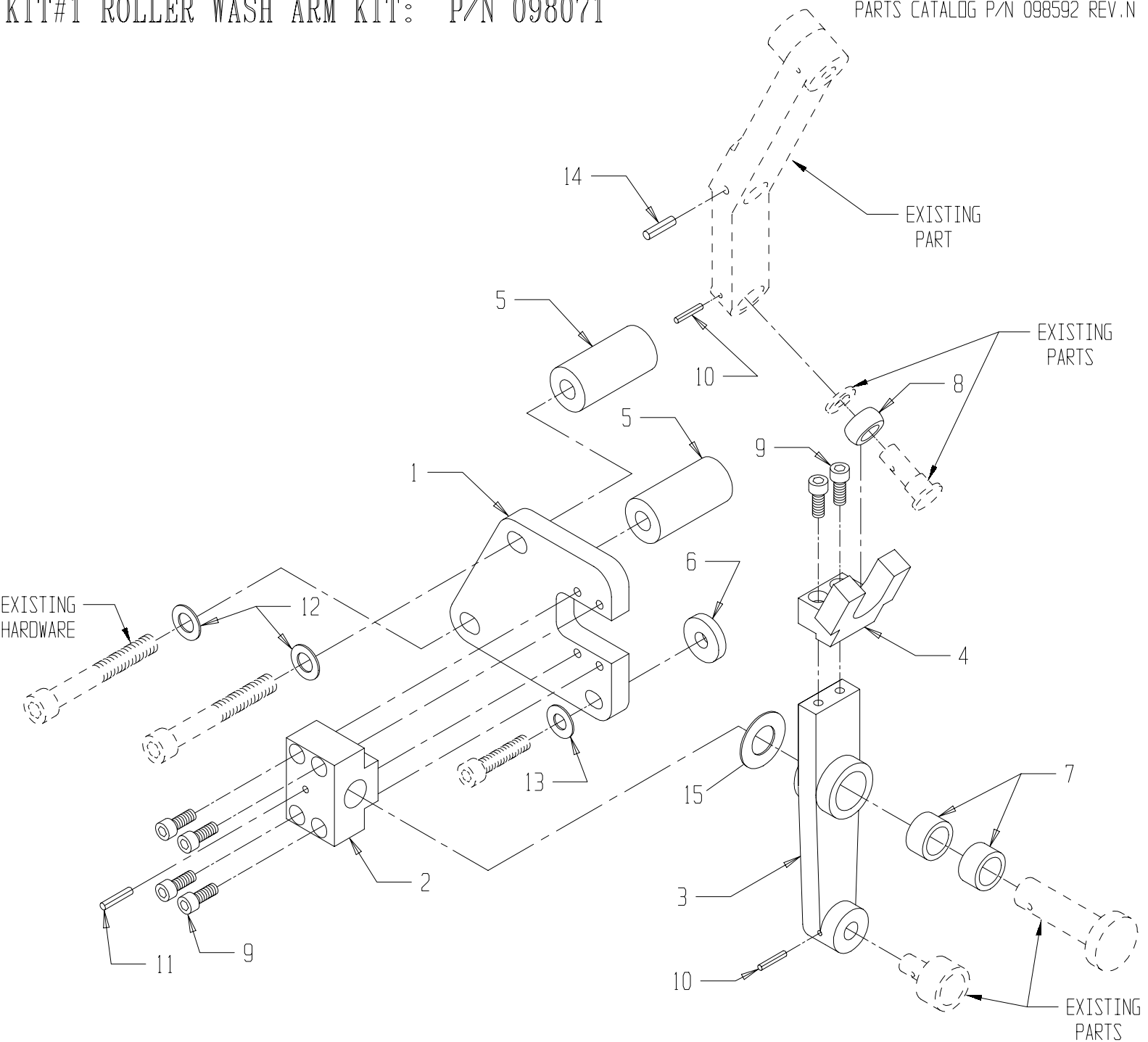
NOTE: PARTS ENCLOSED IN DOTTED LINES ARE THOSE PARTS NEEDED TO CONVERT A STYLE #1 KMO GUARD TO A STYLE #2 KMO GUARD. THESE PARTS MAY BE PURCHASED UNDER P/N 098117.

18	091773	M6 X 1.0 X 12mm CAP SCREW	2
17	091845	SCREW, 10-32 X 3/8 SOCKET HEAD CAP	4
16	091981	M4 FLAT WASHER	8
15	091936	M4 HEX NUT, FULL	4
14	091760	M4 X .7 X 10mm CAP SCREW	6
13	091978	M5 FLAT WASHER	12
12	091752	M5 X .8 HEX NUT	4
11	091765	M5 X .8 X 12mm BUTTON HD CP SCREW	4
10	091743	WASHER, SMALL D.O., M6	4
9	098106	COVER, STYLE-2	1
8	091761	M6 X 1.0 X 18mm CAP SCREW	2
7	092077	HANDLE, PULL	2
6	098105	PIVOT, STYLE-2 OP	1
5	098104	PIVOT, STYLE-2 NOP	1
4	098103	STOP, OP GUARD	1
3	098102	STOP, NOP GUARD	1
2	098097	COVER, HOSE HOLE	1
1	098048	GUARD, SAFETY, KMO	1

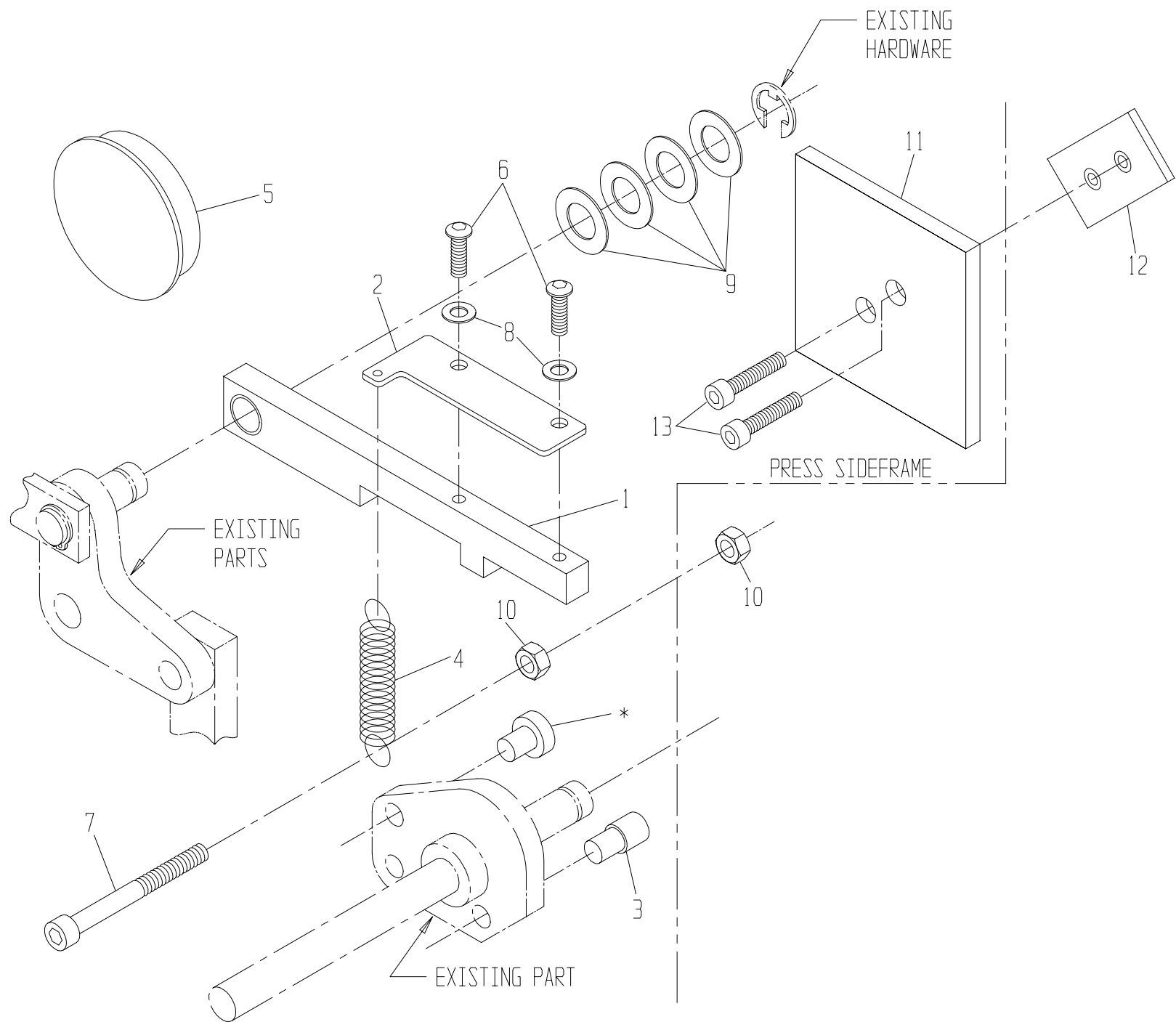
ITEM	PART NO.	DESCRIPTION	QTY.
------	----------	-------------	------

KIT#1 ROLLER WASH ARM KIT: P/N 098071

PARTS CATALOG P/N 098592 REV.N

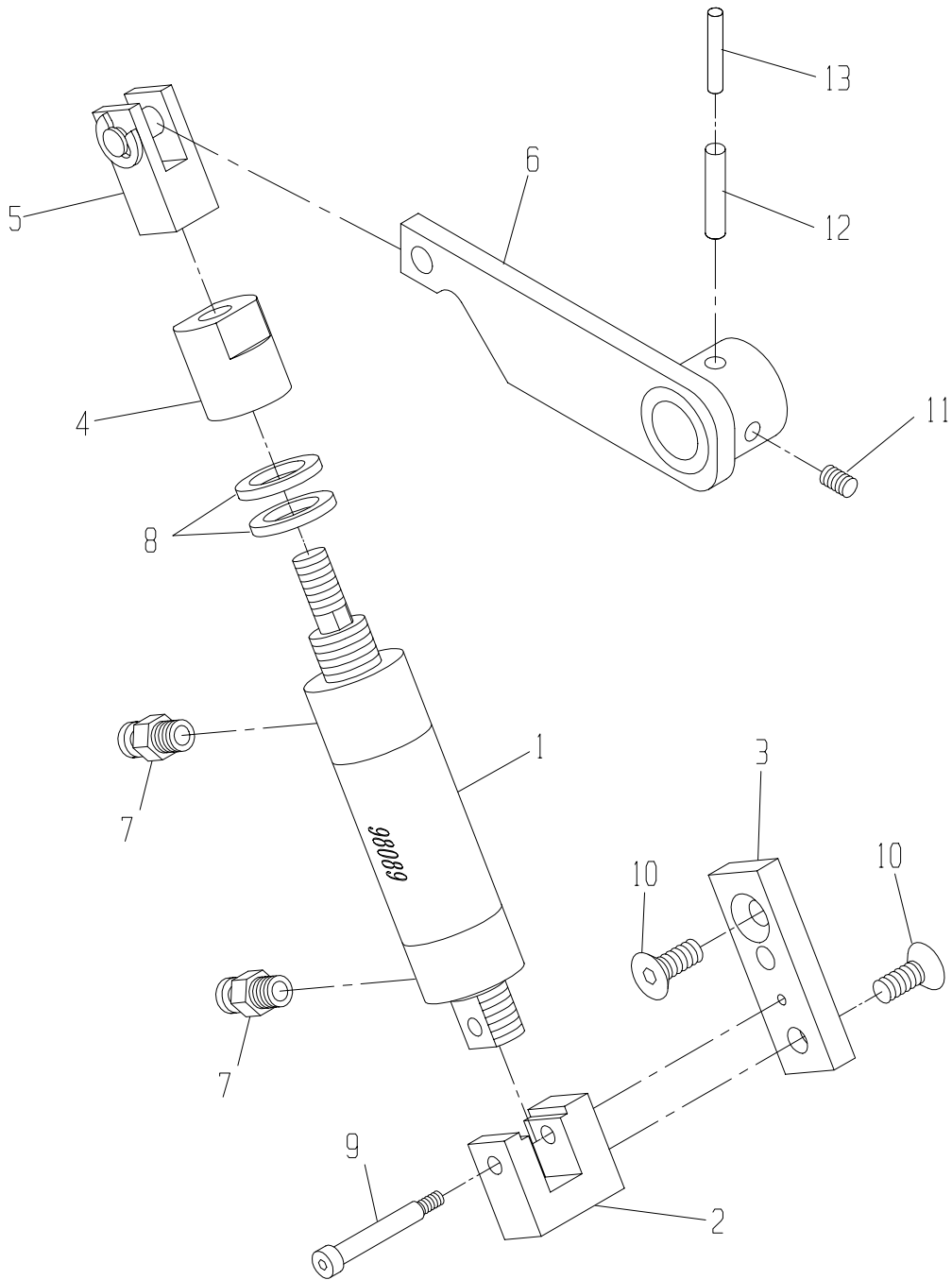


15	091728	SHIM, 1.187 X .632 X .020	1
14	091948	PIN, ROLL, 5mm X 32mm	1
13	091950	FLAT WASHER (M8)	1
12	091976	M10 FLAT WASHER	2
11	091738	PIN, ROLL, 4mm x 30mm	1
10	091938	PIN, ROLL, 3mm x 25mm	2
9	091761	M6 x 1.0 x 18mm CAP SCREW	6
8	098075	PIVOT BUSHING	1
7	098072	BRNG, NEEDLE, Ø16mm x 12mm WIDE	2
6	098074	STANDOFF, ARM BASE, GEAR	1
5	098073	STANDOFF, ARM BASE	2
4	098076	FORK, LOWER ROCKER ARM	1
3	098067	ARM, LOWER ROCKER	1
2	098069	CARRIER, ARM	1
1	098068	BASE, ROCKER ARM	1
ITEM	PART NO.	DESCRIPTION	QTY.



13	091789	SCREW, M5x25mm SDC HD CAP	2
12	098055	PLATE, BACKING, PLUG	1
11	098081	PLATE, BLANKING	1
10	091753	M6 HEX NUT	2
9	091966	.878 OD .478 ID SPACER WASHER	4
8	091978	M5 FLAT WASHER	2
7	091790	SCREW, M6x60mm SDC HD CAP	1
6	091765	M5X.8X12mm BUTTON HD CP SCREW	2
5	093468	BLANKING PLUG FLUSH	1
4	092078	SPRING, EXTENSION	1
3	098079	PIN, AUTO LATCH, LONG	1
2	098078	PLATE, LATCH ARM	1
1	098077	ARM, LATCH	1
ITEM	PART NO.	DESCRIPTION	QTY.

* ITEM PROVIDED IN BRACKET KIT

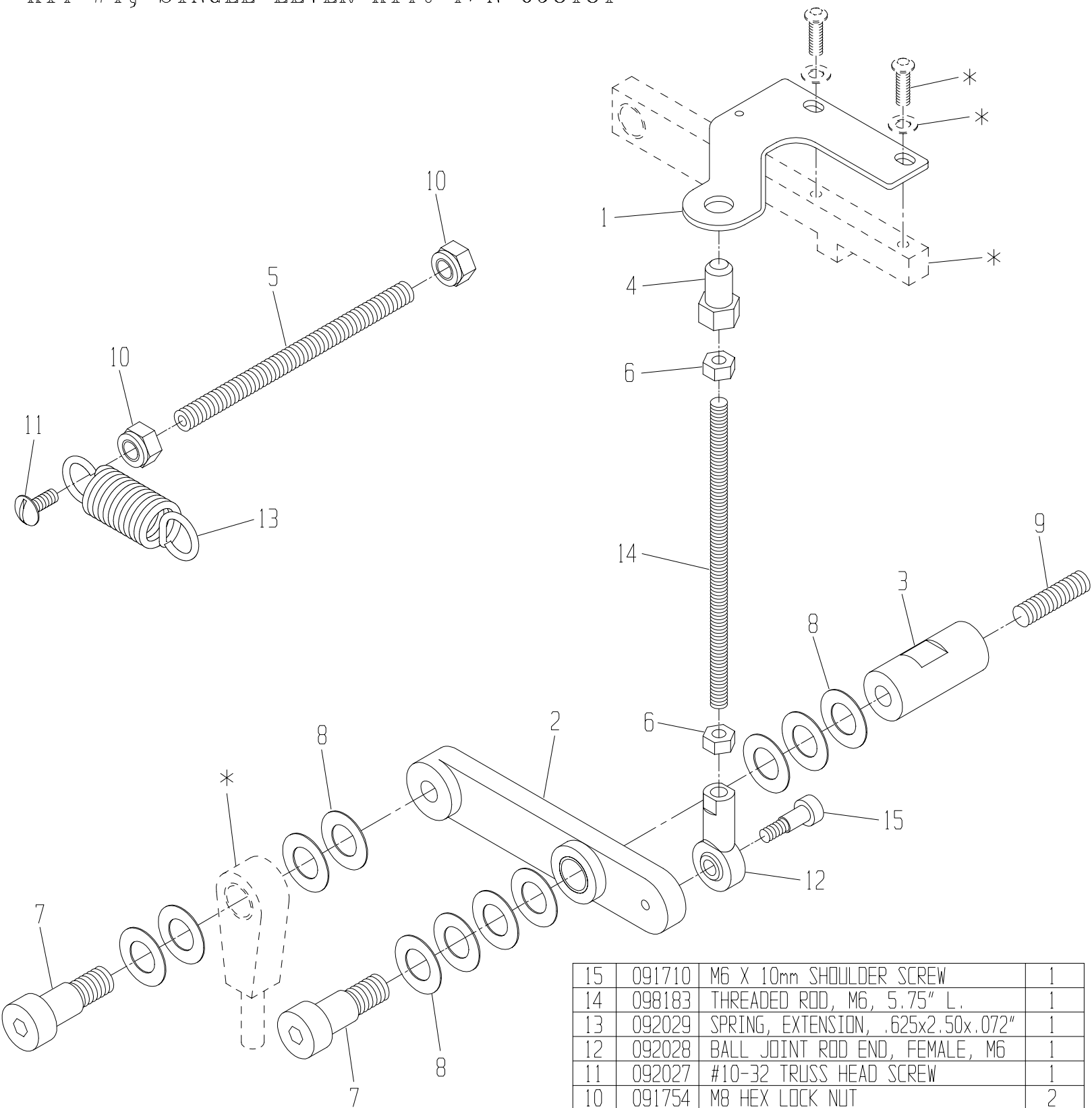


13	092005	PIN, ROLL, 3.5mm X 36mm	1
12	092004	PIN, ROLL, 6mm X 36mm	1
11	091889	M5x10mm SOCKET HEAD SET SCREW	1
10	091748	M8x20mm SCREW FLAT HD SOC CAP	2
9	091793	1/4 x 1-1/2 SHOULDER SCREW	1
8	091737	SHIM, 3/4 x 1-1/8 x 1/8	2
7	098098	NIPPLE, 1/8" NPT TO 6mm TUBE	2
6	098087	ON/OFF ARM	1
5	098093	PISTON ROD CLEVIS	1
4	098085	CYLINDER STOP	1
3	098083	CYLINDER BASE PLATE	1
2	098084	CYLINDER BASE BLOCK	1
1	098089	AIR CYLINDER	1

ITEM	PART NO.	DESCRIPTION	QTY.
------	----------	-------------	------

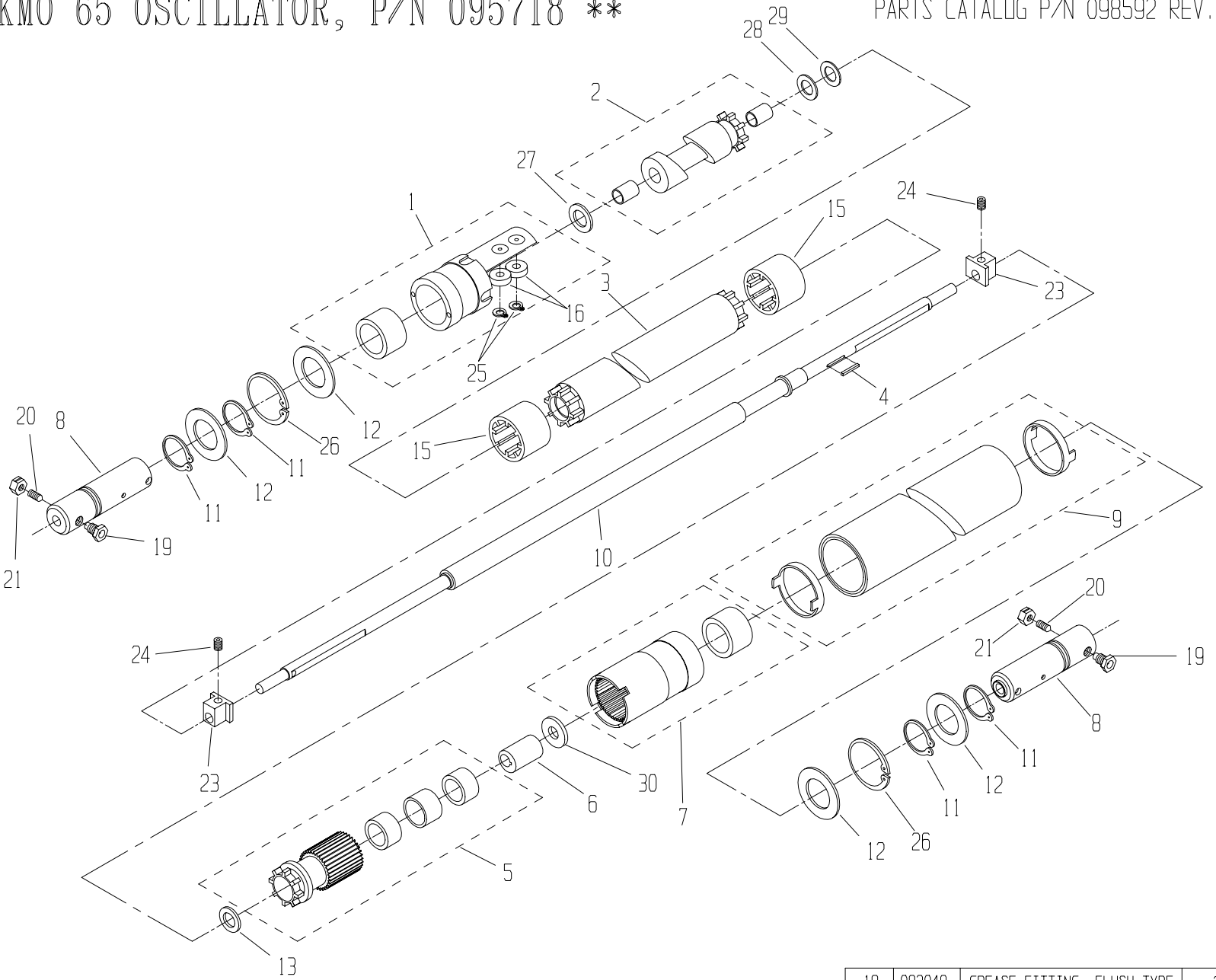
KIT #4, SINGLE LEVER KIT: P/N 098181

PARTS CATALOG P/N 098592 REV.N



15	091710	M6 X 10mm SHOULDER SCREW	1
14	098183	THREADED ROD, M6, 5.75" L.	1
13	092029	SPRING, EXTENSION, .625x2.50x.072"	1
12	092028	BALL JOINT ROD END, FEMALE, M6	1
11	092027	#10-32 TRUSS HEAD SCREW	1
10	091754	M8 HEX LOCK NUT	2
9	092026	M8 X 30mm SET SCREW	1
8	091966	WASHER, .878 x .478 x .02"	11
7	091607	M12 X 16mm SHOULDER SCREW	2
6	091753	M6 HEX NUT	2
5	098182	THREADED ROD, M8, 4.33" L.	1
4	098179	PIN, GUIDE	1
3	098178	PIVOT, ARM	1
2	098177	ARM, ENGAGEMENT	1
1	098174	PLATE, GUIDE	1
ITEM	PART NO.	DESCRIPTION	QTY.

* ITEM IS NOT INCLUDED WITH KIT #4, P/N 098181



** ITEMS 23 & 24 NOT INCLUDED WITH P/N 095717

* PART INCLUDED WITH OUTLINED ASSEMBLY

ITEM	PART #	DESCRIPTION	QTY
30	095787	WASHER	1
29	095784	WASHER	1
28	095783	BEARING THRUST	1
27	095782	BEARING THRUST	1
26	092108	RET. RING	2
25	092109	RET. RING	*
24	091888	SCREW, SET M5x5	2
23	092174	MOUNTING BLOCK	2
22	-	-	-
21	092116	NUT, LOCK 8-32	2
20	092115	SCREW, SET 8-32x1/2	2
ITEM	PART #	DESCRIPTION	QTY

19	092048	GREASE FITTING, FLUSH TYPE	2
18	-	-	-
17	-	-	-
16	095762	BEARING, EXTRA SMALL	*
15	095759	COUPLING SLEEVE	2
14	-	-	-
13	092114	WASHER, THRUST	1
12	092113	WASHER, 1.29x.76x.06	4
11	092107	RET. RING EXTERNAL	4
10	095778	SHAFT	1
9	095773	ROLLER ASSY (RUBBER)	1
8	095752	SHAFT SUPPORT	2
7	095777	INTERN. SPUR GEAR ASSY	1
6	099550	ECCENTRIC	1
5	099821	PINION CPLNG ASSY	1
4	092105	KEY, SQ 1/16x1/16x1/2 LG	1
3	095767	SPACER TUBE	1
2	095775	OSCILL. CAM ASSY	1
1	095774	CAM FOLLOWER ASSY	1
ITEM	PART #	DESCRIPTION	QTY