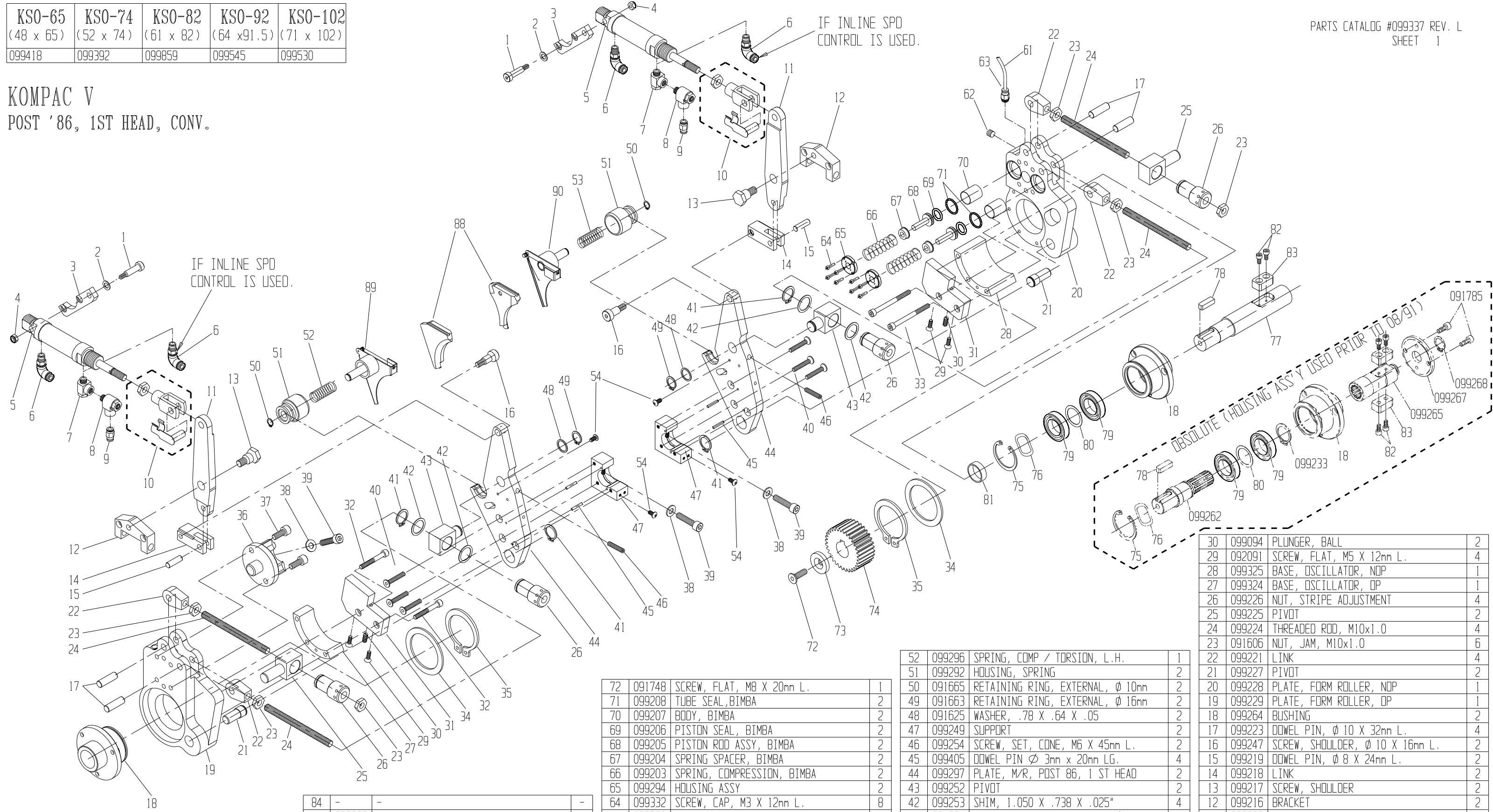


KSO-65 (48 x 65)	KSO-74 (52 x 74)	KSO-82 (61 x 82)	KSO-92 (64 x 91.5)	KSO-102 (71 x 102)
099418	099392	099859	099545	099530

KOMPAC V
POST '86, 1ST HEAD, CONV.



ITEM	PART #	DESCRIPTION	QTY
92	09	X	X
91	09	X	X
90	099362	BACKING PLATE ASS'Y N.O.P.	1
89	099361	BACKING PLATE ASS'Y D.P.	1
88	099382	SEALS SET	1
87	-	-	-
86	-	-	-
85	-	-	1

ITEM	PART #	DESCRIPTION	QTY
84	-	-	-
83	099266	KEY	1
82	091757	SCREW, CAP, M5 X 10mm L.	2
81	099459	SPACER	1
80	099232	SHIM, 1.300 X .988 X .015"	1
79	099263	BEARING, ROLLER, 42 X 25 X 9mm	2
78	099261	KEY	1
77	099492	SHAFT, DRIVE	1
76	099259	WAVE WASHER, Ø 42mm	1
75	099333	RETAINING RING, INTERNAL, Ø 42mm	1
74	099256	GEAR	1
73	099255	END WASHER	1

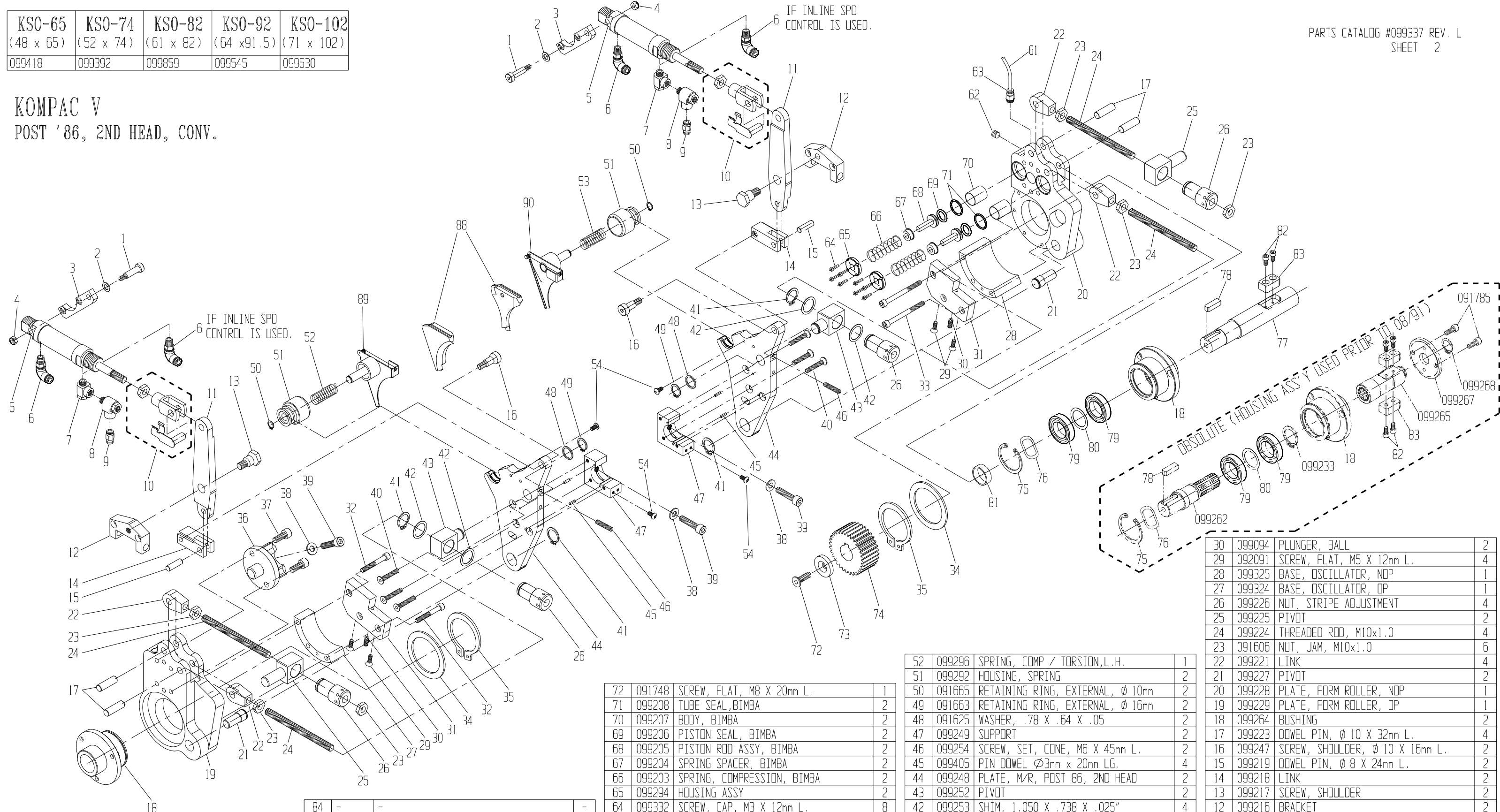
ITEM	PART #	DESCRIPTION	QTY
72	091748	SCREW, FLAT, M8 X 20mm L.	1
71	099208	TUBE SEAL, BIMBA	2
70	099207	BODY, BIMBA	2
69	099206	PISTON SEAL, BIMBA	2
68	099205	PISTON ROD ASSY, BIMBA	2
67	099204	SPRING SPACER, BIMBA	2
66	099203	SPRING, COMPRESSION, BIMBA	2
65	099294	HOUSING ASSY	2
64	099332	SCREW, CAP, M3 X 12mm L.	8
63	099380	FTG, CONN ST, 1/8 -5/32.	1
62	099377	1/16 N.P.T. PLUG	1
61	099491	TUBING, 4MM	1
-	-	-	-
-	-	-	-
-	-	-	-
-	-	-	-
54	091768	SCREW, CAP BUTTON HD. M5 X 10mm LG.	4
53	099291	SPRING, COMP / TORSION, R.H.	1

ITEM	PART #	DESCRIPTION	QTY
52	099296	SPRING, COMP / TORSION, L.H.	1
51	099292	HOUSING, SPRING	2
50	091665	RETAINING RING, EXTERNAL, Ø 10mm	2
49	091663	RETAINING RING, EXTERNAL, Ø 16mm	2
48	091625	WASHER, .78 X .64 X .05	2
47	099249	SUPPORT	2
46	099254	SCREW, SET, CONE, M6 X 45mm L.	2
45	099405	DOWEL PIN Ø 3mm x 20mm LG.	4
44	099297	PLATE, M/R, POST 86, 1 ST HEAD	2
43	099252	PIVOT	2
42	099253	SHIM, 1.050 X .738 X .025"	4
41	091664	RETAINING RING, EXTERNAL, Ø 20mm	4
40	091654	SCREW, FLAT, M6 X 35mm L.	6
39	091892	SCREW, CAP, M8 X 35mm L.	3
38	099281	WASHER, M8	3
37	091758	SCREW, CAP, M8 X 20mm L.	2
36	099316	HANGER, FORM ROLLER	1
35	099257	RETAINING RING, EXTERNAL, Ø 55mm	2
34	099258	SPACER, BUSHING	2
33	099331	SCREW, CAP, M6 X 70mm L.	2
32	099329	SCREW, CAP, M6 X 45mm L.	2
31	099327	BRACKET, OSCILLATOR	2

ITEM	PART #	DESCRIPTION	QTY
30	099094	PLINGER, BALL	2
29	092091	SCREW, FLAT, M5 X 12mm L.	4
28	099325	BASE, OSCILLATOR, NDP	1
27	099324	BASE, OSCILLATOR, DP	1
26	099226	NUT, STRIPE ADJUSTMENT	4
25	099225	PIVOT	2
24	099224	THREADED ROD, M10x1.0	4
23	091606	NUT, JAM, M10x1.0	6
22	099221	LINK	4
21	099227	PIVOT	2
20	099228	PLATE, FORM ROLLER, NDP	1
19	099229	PLATE, FORM ROLLER, DP	1
18	099264	BUSHING	2
17	099223	DOWEL PIN, Ø 10 X 32mm L.	4
16	099247	SCREW, SHOULDER, Ø 10 X 16mm L.	2
15	099219	DOWEL PIN, Ø 8 X 24mm L.	2
14	099218	LINK	2
13	099217	SCREW, SHOULDER	2
12	099216	BRACKET	2
11	099298	LEVER, POST 86, 1ST HEAD	2
10	099214	ROD CLEVIS	2
9	099007	FITTING, 1/8-6mm, UNI-THD, SMC	2
8	099006	VALVE, FLOW SPEED CONTROL	2
7	099008	FITTING, ELBOW, 1/8 M-F, BSPT	2
6	099013	FITTING, ELBOW, 1/8-6mm, UNI-THD	2
5	099213	AIR CYLINDER	2
4	091973	NUT, LOCK, M6x1.0	2
3	099212	BRACKET	2
2	099211	SHIM, Ø 8 X 1.0mm THK.	2
1	099209	SCREW, SHOULDER, Ø 8 X 25mm L.	2

KSO-65 (48 x 65)	KSO-74 (52 x 74)	KSO-82 (61 x 82)	KSO-92 (64 x 91.5)	KSO-102 (71 x 102)
099418	099392	099859	099545	099530

KOMPAC V
POST '86, 2ND HEAD, CONV.



92	09	X	X
91	09	X	X
90	099362	BACKING PLATE ASS'Y N.O.P.	1
89	099361	BACKING PLATE ASS'Y O.P.	1
88	099382	SEALS SET	1
87	-	-	-
86	-	-	-
85	-	-	-

84	-	-	-
83	099266	KEY	1
82	091757	SCREW, CAP, M5 X 10mm L.	2
81	099459	SPACER	1
80	099232	SHIM, 1.300 X .988 X .015"	1
79	099263	BEARING, ROLLER, 42 X 25 X 9mm	2
78	099261	KEY	1
77	099492	SHAFT, DRIVE	1
76	099259	WAVE WASHER, ϕ 42mm	1
75	099333	RETAINING RING, INTERNAL, ϕ 42mm	1
74	099256	GEAR	1
73	099255	END WASHER	1

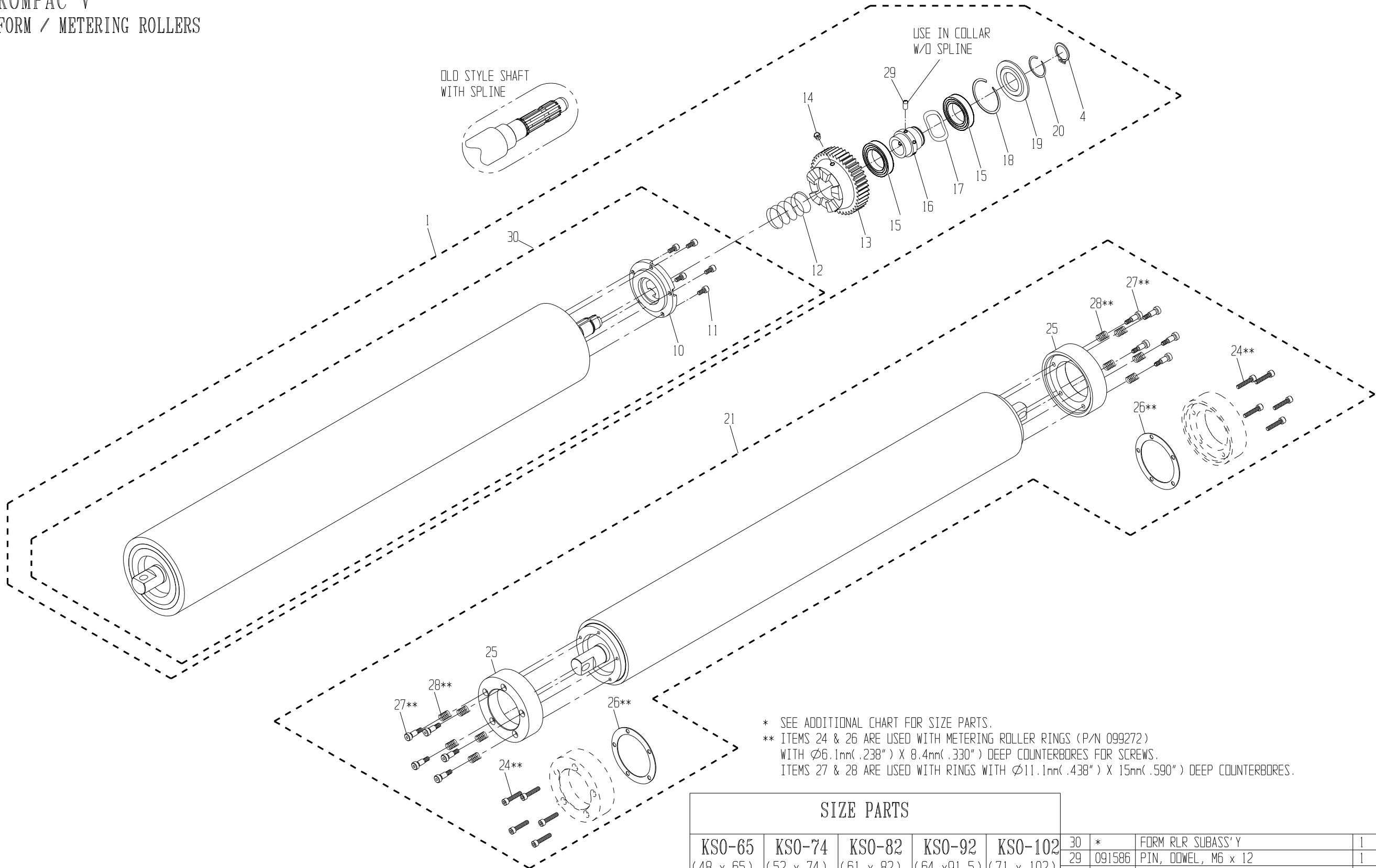
72	091748	SCREW, FLAT, M8 X 20mm L.	1
71	099208	TUBE SEAL, BIMBA	2
70	099207	BODY, BIMBA	2
69	099206	PISTON SEAL, BIMBA	2
68	099205	PISTON ROD ASSY, BIMBA	2
67	099204	SPRING SPACER, BIMBA	2
66	099203	SPRING, COMPRESSION, BIMBA	2
65	099294	HOUSING ASSY	2
64	099332	SCREW, CAP, M3 X 12mm L.	8
63	099380	FTG, CONN ST, 1/8NPT - 5/32.	1
62	099377	1/16 N.P.T. PLUG	1
61	099491	TUBING, 4MM	1
-	-	-	-
-	-	-	-
-	-	-	-
-	-	-	-
-	-	-	-
54	091768	SCREW, CAP, BUTTON HD M5 X 10mm LG.	4
53	099291	SPRING, COMP / TORSION, R.H.	1

52	099296	SPRING, COMP / TORSION, L.H.	1
51	099292	HOUSING, SPRING	2
50	091665	RETAINING RING, EXTERNAL, ϕ 10mm	2
49	091663	RETAINING RING, EXTERNAL, ϕ 16mm	2
48	091625	WASHER, .78 X .64 X .05	2
47	099249	SUPPORT	2
46	099254	SCREW, SET, CONE, M6 X 45mm L.	2
45	099405	PIN DOWEL ϕ 3mm x 20mm LG.	4
44	099248	PLATE, M/R, POST 86, 2ND HEAD	2
43	099252	PIVOT	2
42	099253	SHIM, 1.050 X .738 X .025"	4
41	091664	RETAINING RING, EXTERNAL, ϕ 20mm	4
40	091654	SCREW, FLAT, M6 X 35mm L.	6
39	091892	SCREW, CAP, M8 X 35mm L.	3
38	099281	WASHER, M8	3
37	091758	SCREW, CAP, M8 X 20mm L.	2
36	099316	HANGER, FORM ROLLER	1
35	099257	RETAINING RING, EXTERNAL, ϕ 55mm	2
34	099258	SPACER, BUSHING	2
33	099331	SCREW, CAP, M6 X 70mm L.	2
32	099329	SCREW, CAP, M6 X 45mm L.	2
31	099328	BRACKET, OSCILLATOR	2

30	099094	PLINGER, BALL	2
29	092091	SCREW, FLAT, M5 X 12mm L.	4
28	099325	BASE, OSCILLATOR, NDP	1
27	099324	BASE, OSCILLATOR, OP	1
26	099226	NUT, STRIPE ADJUSTMENT	4
25	099225	PIVOT	2
24	099224	THREADED ROD, M10x1.0	4
23	091606	NUT, JAM, M10x1.0	6
22	099221	LINK	4
21	099227	PIVOT	2
20	099228	PLATE, FORM ROLLER, NDP	1
19	099229	PLATE, FORM ROLLER, OP	1
18	099264	BUSHING	2
17	099223	DOWEL PIN, ϕ 10 X 32mm L.	4
16	099247	SCREW, SHOULDER, ϕ 10 X 16mm L.	2
15	099219	DOWEL PIN, ϕ 8 X 24mm L.	2
14	099218	LINK	2
13	099217	SCREW, SHOULDER	2
12	099216	BRACKET	2
11	099215	LEVER, POST 86, 2ND HEAD	2
10	099214	ROD CLEVIS	2
9	099007	FITTING, 1/8-6mm, UNI-THD, SMC	2
8	099006	VALVE, FLOW SPEED CONTROL	2
7	099008	FITTING, ELBOW, 1/8 M-F, BSPT	2
6	099013	FITTING, ELBOW, 1/8-6mm, UNI-THD	2
5	099213	AIR CYLINDER	2
4	091973	NUT, LOCK, M6x1.0	2
3	099212	BRACKET	2
2	099211	SHIM, ϕ 8 X 1.0mm THK.	2
1	099209	SCREW, SHOULDER, ϕ 8 X 25mm L.	2

ITEM	PART #	DESCRIPTION	QTY	ITEM	PART #	DESCRIPTION	QTY	ITEM	PART #	DESCRIPTION	QTY	ITEM	PART #	DESCRIPTION	QTY
------	--------	-------------	-----	------	--------	-------------	-----	------	--------	-------------	-----	------	--------	-------------	-----

KOMPAC V
FORM / METERING ROLLERS



* SEE ADDITIONAL CHART FOR SIZE PARTS.
 ** ITEMS 24 & 26 ARE USED WITH METERING ROLLER RINGS (P/N 099272)
 WITH $\phi 6.1\text{mm} (.238") \times 8.4\text{mm} (.330")$ DEEP COUNTERBORES FOR SCREWS.
 ITEMS 27 & 28 ARE USED WITH RINGS WITH $\phi 11.1\text{mm} (.438") \times 15\text{mm} (.590")$ DEEP COUNTERBORES.

SIZE PARTS

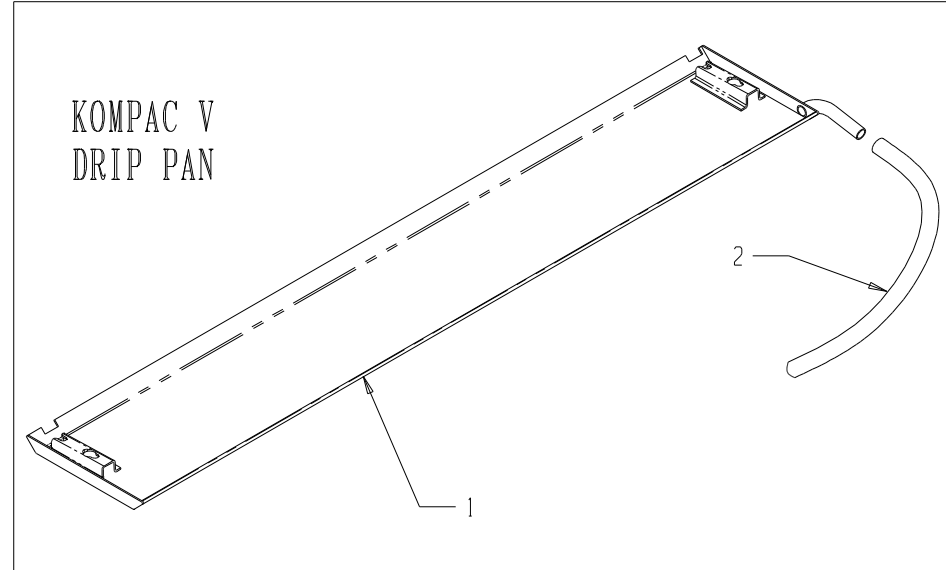
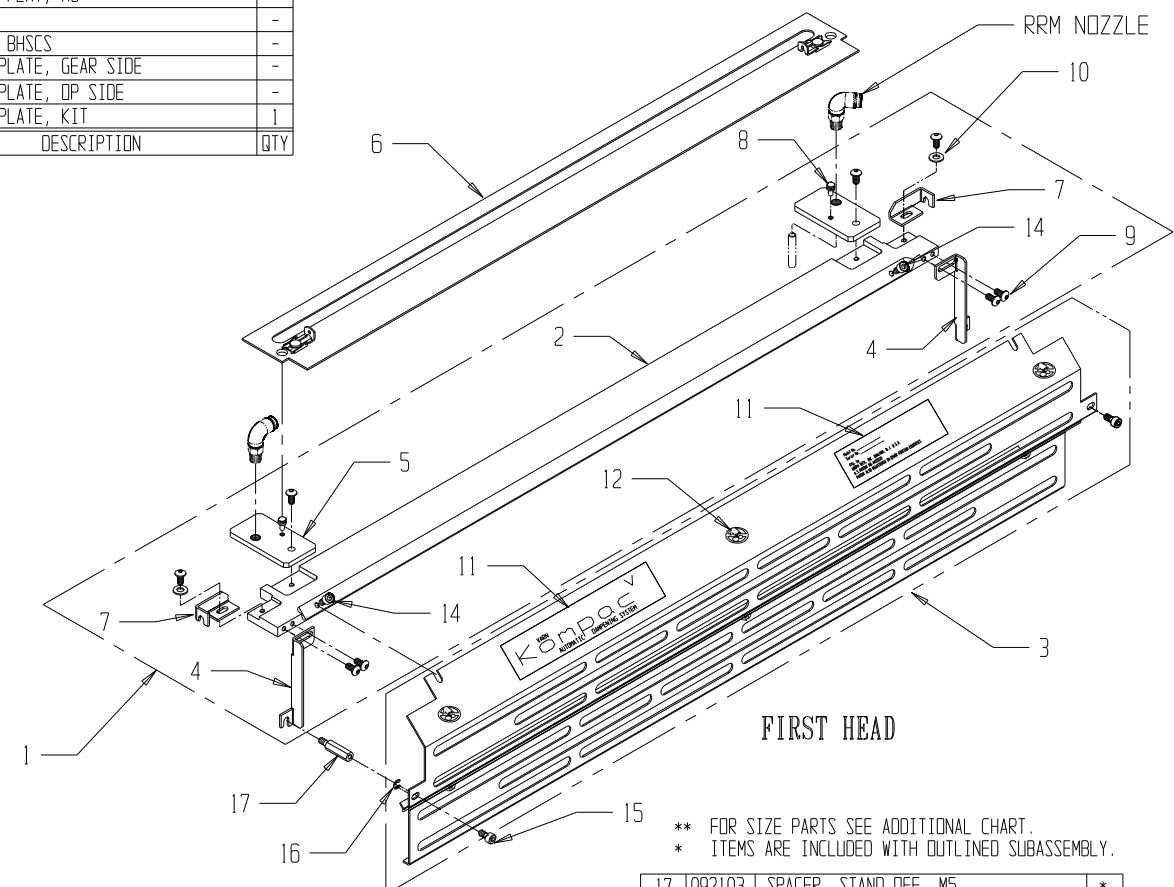
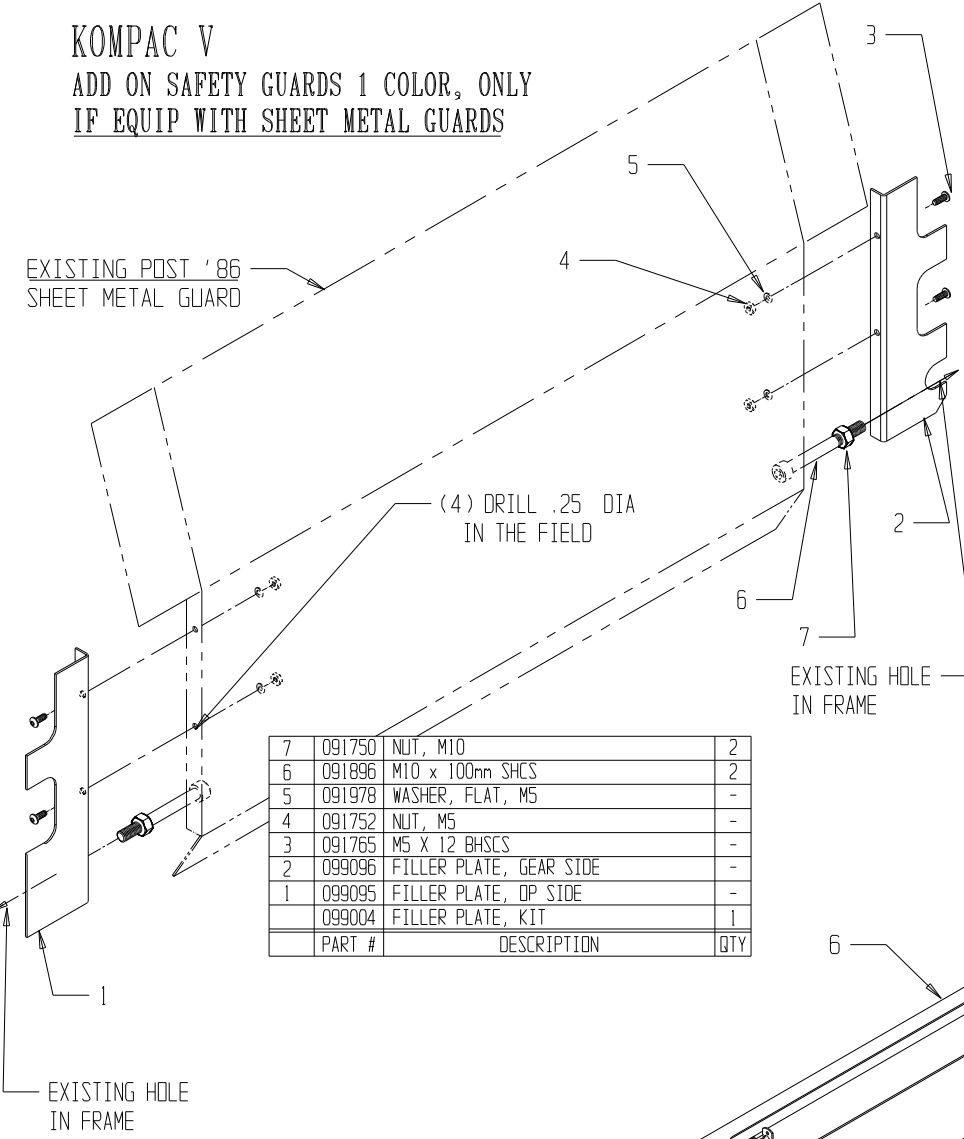
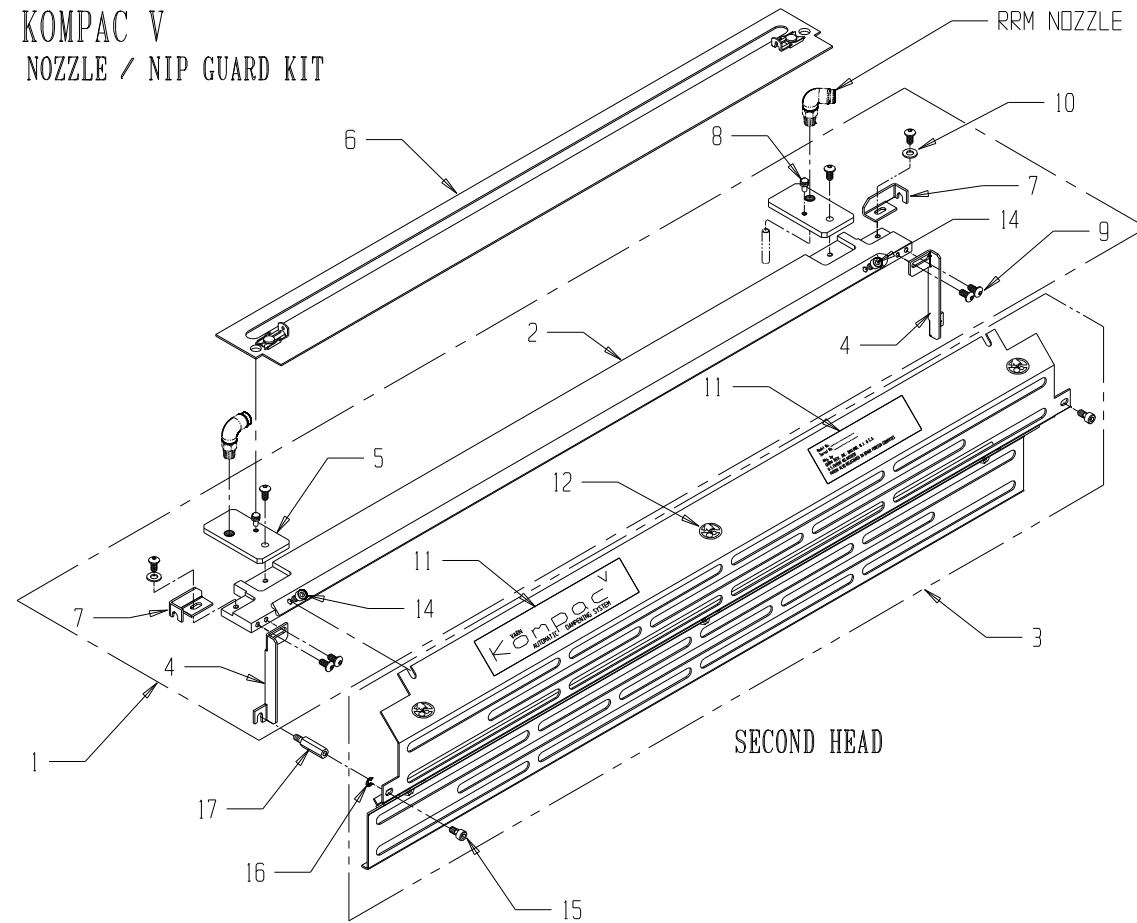
	KSO-65 (48 x 65)	KSO-74 (52 x 74)	KSO-82 (61 x 82)	KSO-92 (64 x 91.5)	KSO-102 (71 x 102)
30	099856	099857	099875	099497	099858
21	099387	099279	099879	099509	099463
1	099383	099278	099874	099513	099459

20	099242	RET. RING, EXTERNAL, $\phi 1.062"$, SPIRAL	1
19	099241	SHIELD	1
18	099239	RET. RING, INTERNAL, $\phi 1.875"$, SPIRAL	1
17	099238	WAVE WASHER, 37mm O.D.	2
16	099244	COLLAR	1
15	099237	BEARING, BALL, 47 X 30 X 9mm	2
14	092048	GREASE FITTING	1
13	099236	GEAR, FORM ROLLER	1
12	099246	SPRING, COMPRESSION	1
11	091757	SCREW, CAP, M5 X 10mm L.	5
10	099245	HUB, ENGAGEMENT	1

ITEM	PART #	DESCRIPTION	QTY	ITEM	PART #	DESCRIPTION	QTY
		FORM RLR SUBASS'Y	1				
		PIN, DOWEL, M6 x 12	1				
		SPRING, COMPRESSION, .360x.625x.051	**				
		SCREW, SHOULDER, M6 X 12mm L.	**				
		SHIM, LAMINATED	**				
		RING, METERING ROLLER	2				
		SCREW, CAP, M5 X 25mm L.	**	4	099243	RETAINING RING, EXTERNAL, $\phi 22\text{mm}$	1
		ASSY, METERING ROLLER	-	1	*	ASSY, FORM ROLLER	-

KOMPAC V
 ADD ON SAFETY GUARDS 1 COLOR, ONLY
 IF EQUIP WITH SHEET METAL GUARDS

KOMPAC V
 NOZZLE / NIP GUARD KIT



KOMPAC V
 DRIP PAN

3	-	-	-
2	098011	TUBING, PLASTIC	2
1	099611	PAN, DRIP	2
ITEM	PART #	DESCRIPTION	QTY

KSO-102
(71 x 102)

3	-	-	-
2	098011	TUBING, PLASTIC	2
1	099713	PAN, DRIP	2
ITEM	PART #	DESCRIPTION	QTY

KSO-92
(64 x 91.5)

3	-	-	-
2	098011	TUBING, PLASTIC	2
1	099897	PAN, DRIP	2
ITEM	PART #	DESCRIPTION	QTY

KSO-82
(61 x 82)

3	-	-	-
2	098011	TUBING, PLASTIC	2
1	099086	PAN, DRIP	2
ITEM	PART #	DESCRIPTION	QTY

KSO-74
(52 x 74)

3	-	-	-
2	098011	TUBING, PLASTIC	2
1	099195	PAN, DRIP	2
ITEM	PART #	DESCRIPTION	QTY

KSO-65
(48 x 65)

3	-	-	-
2	098011	TUBING, PLASTIC	2
1	099195	PAN, DRIP	2
ITEM	PART #	DESCRIPTION	QTY

** FOR SIZE PARTS SEE ADDITIONAL CHART.
 * ITEMS ARE INCLUDED WITH OUTLINED SUBASSEMBLY.

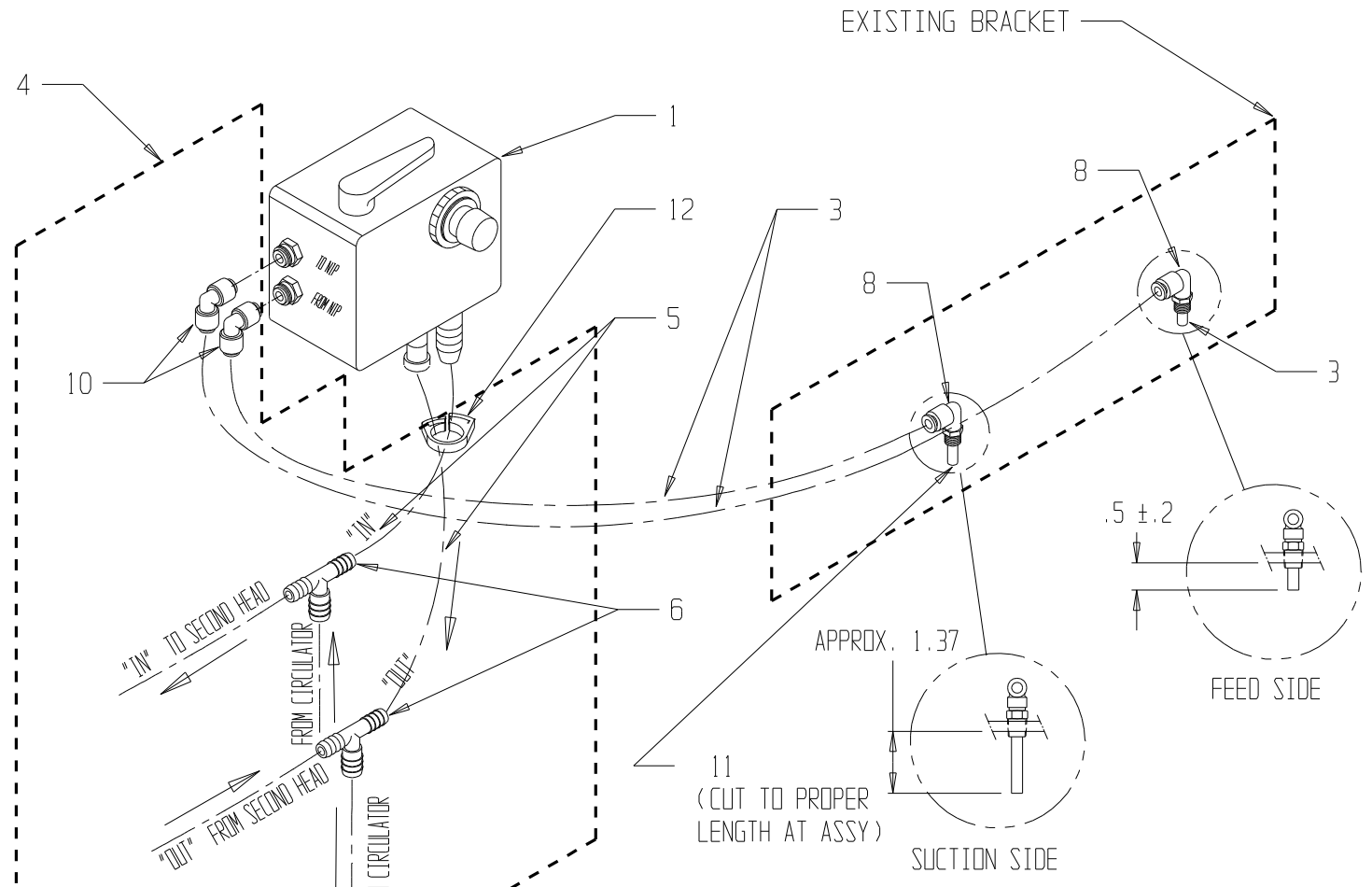
SIZE PARTS									
	KSO-65	KSO-74	KSO-82	KSO-92	KSO-102				
	(48 x 65)	(52 x 74)	(61 x 82)	(64 x 91.5)	(71 x 102)				
-	-	-	-	-	-	17	092103	SPACER, STAND OFF, M5	*
-	-	-	-	-	-	16	091992	E-RING	*
-	-	-	-	-	-	15	099168	SCREW, CAPTIVE, M5	*
6	099440	099069	099896	099712	099608	14	091757	SCREW, M5	*
3	099458, 99444	099199, 99198	099901, 99891	099720, 99709	099719, 99685	13	-	-	*
2	099196	099063	099895	099711	099607	12	092601	LABEL, LOGO, NIP POINT	*
1	099441	099072	099890	099708	099684	11	099065	LABEL, LOGO	*
KIT	099139, 99456	099445, 99446	099872, 99873	099723, 99721	099722, 99683	10	091978	WASHER, FLAT, M5	*
ITEM	PART NUMBERS (1ST & 2ND HEAD)					9	091768	SCREW, BUTTON HD CAP SCREW, M5	*
						8	092073	STUD, RETAINING	*
						7	099068	TOP BAR SUPPORT, SET	*
						6	**	COVER, NIP	*
						5	099062	NOZZLE BKT	*
						4	099067	SIDE BAR SUPPORT, SET	*
						3	**	GUARD, FRONT	*
						2	**	BAR, GUARD	*
						1	**	NOZZLE/RLR BAR GUARD ASSY	*
ITEM	PART NUMBERS (1ST & 2ND HEAD)					ITEM	PART #	DESCRIPTION	QTY

RRM ASS'Y: P/N 099393

RECIRCULATOR SUBASS'Y: P/N 094730

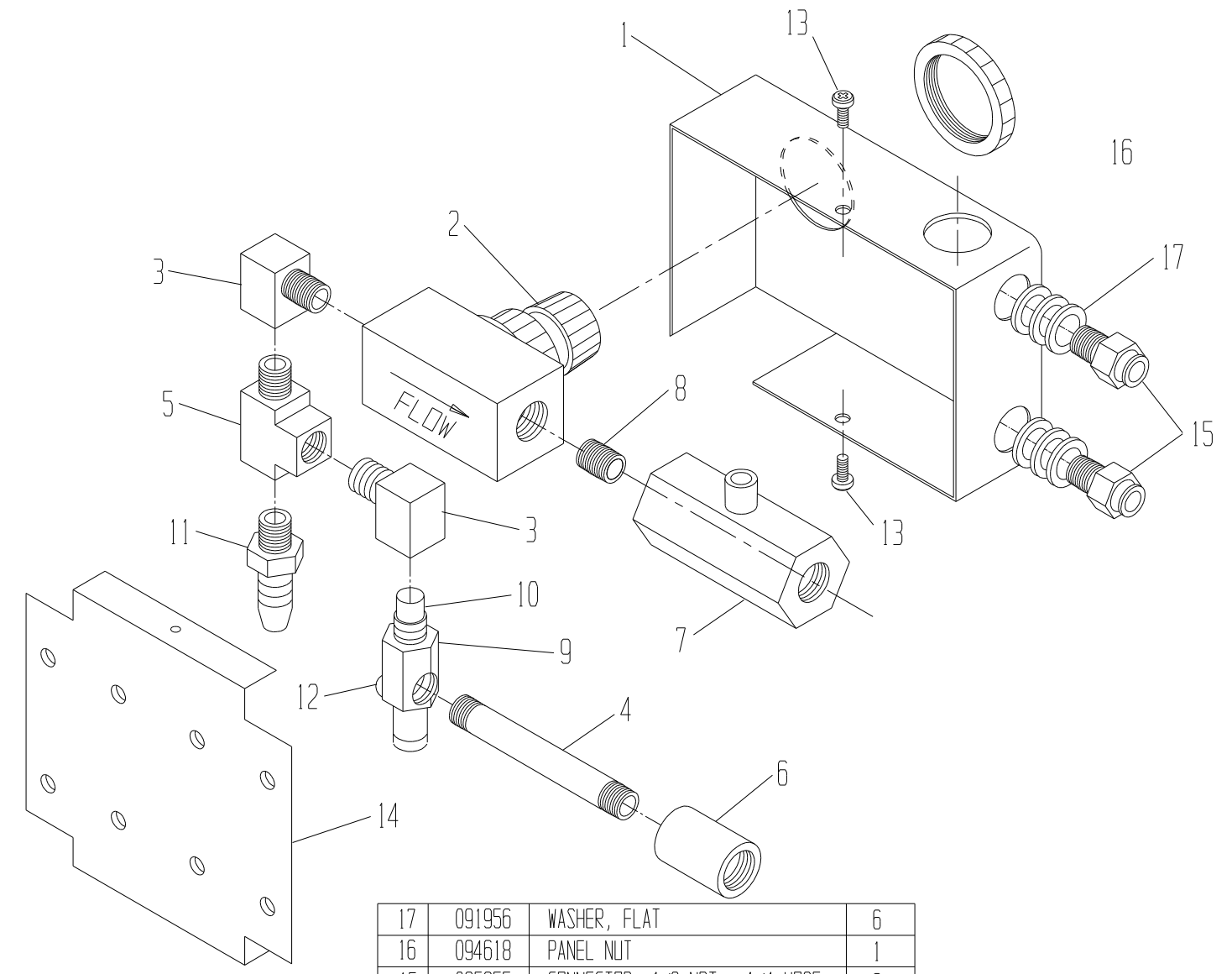
- NOTES:
 1. GIVEN QUANTITY IS PER (1) PRINTING HEAD
 2. ITEMS MARKED * ARE PART OF OUTLINED SUBASS'Y
 2. ITEMS MARKED ** - FOR 2 COLOR PRESS.
 3. ITEMS MARKED *** - FOR 1 COLOR PRESS.

NOTE: USE THREAD SEALANT FELPRO #51370 OR EQUIVALENT ON ALL PIPE THREADED CONNECTIONS



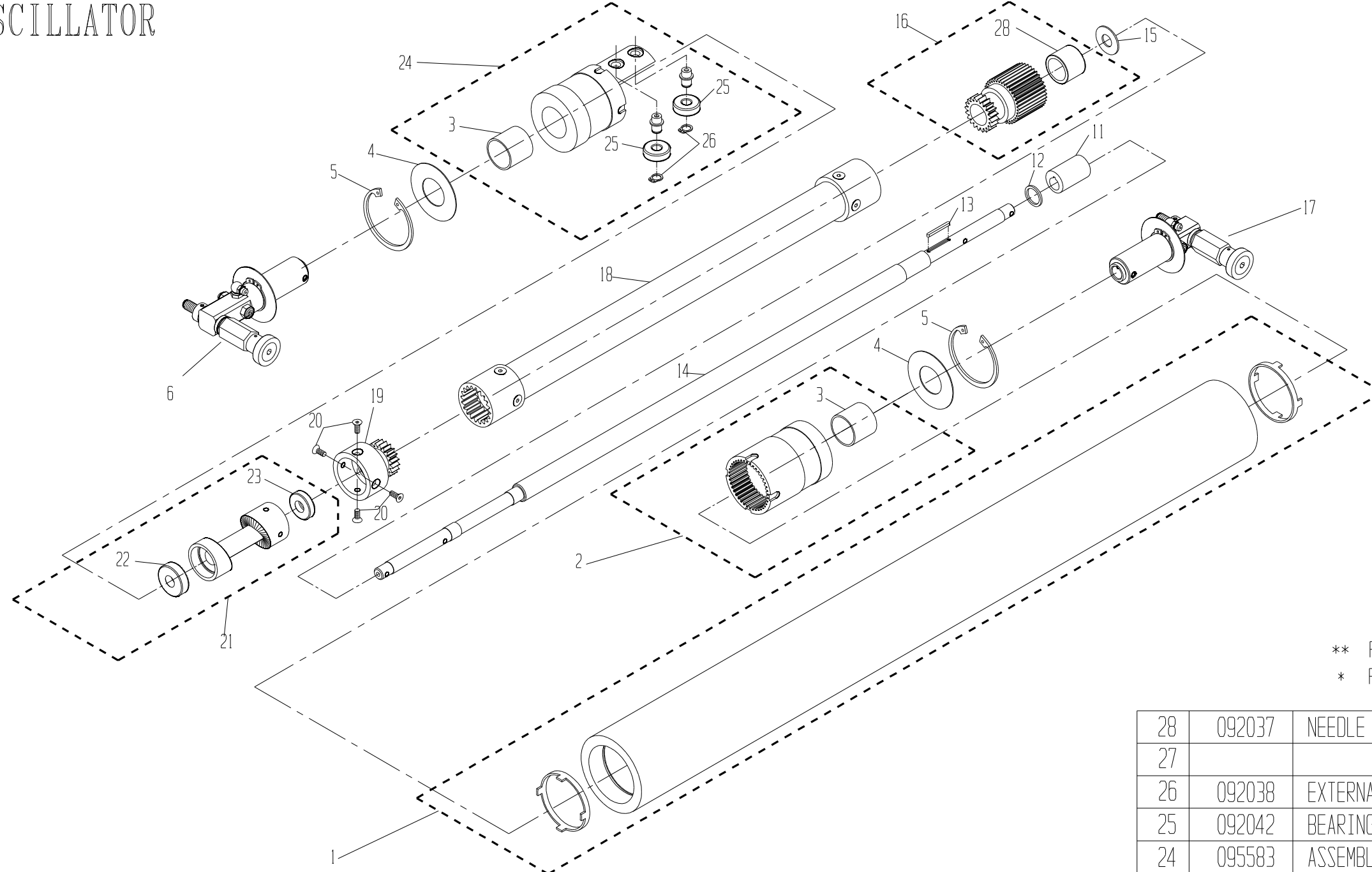
SCALE 1:4

13	-	-	-
12	091043	CLAMP, HOSE, NYLON 5/8"	*
11	091078	1/4 D.D. TUBING, 2" LG	*
10	091082	ELBOW 1/4 D.D. TUBING	*
09			
08	094916	ELBOW	*
07	091063	CLAMP, HOSE, NYLON 3/4"	*
***	06	091066	REDUCER 1/2 X 3/8
**	06	091077	BARB TEE 1/2 X 3/8 X 3/8
05	091081	PVC FLEX. TUBING 3/8 I.D. X 5/8 D.D.	*
04	095924	HOSE KIT	1
03	091079	TUBING 1/4 D.D. X .170 I.D.(POLYETH)	*
02			
01	094730	RECIRCULATOR ASS'Y	1
ITEM	PART NO.	DESCRIPTION	QTY.



17	091956	WASHER, FLAT	6
16	094618	PANEL NUT	1
15	095955	CONNECTOR 1/8 NPT x 1/4 HOSE.	2
14	094612	PLATE, MOUNTING	1
13	091907	SCREW #6-32 PAN HD. SELF-TAP	2
12	091824	SCREW #6-32 TRUSS HD.	1
11	091062	FITTING, 1/8 NPT x 3/8 BARB	1
10	095939	TIP, VACUUM	1
09	095938	BODY, VACUUM	1
08	095948	NIPPLE, CLOSE, 1/8 NPT	1
07	095949	BALL VALVE	1
06	094616	COUPLING, 1/8 NPT	1
05	094613	TEE, STREET, 1/8 NPT	1
04	094615	NIPPLE, LONG, 1/8 NPT	1
03	094614	ELBOW, STREET, 1/8 NPT	2
02	094617	NEEDLE VALVE	1
01	094611	ENCLOSURE	1
ITEM	PART NO.	DESCRIPTION	QTY.

KV OSCILLATOR



** FOR SIZE PARTS SEE ADDITIONAL CHART.
* PARTS INCLUDED WITH OUTLINED SUBASSEMBLY

28	092037	NEEDLE BEARING #HK-2020	1
27			
26	092038	EXTERNAL RET. RING 8MM SHAFT	*
25	092042	BEARING	*
24	095583	ASSEMBLY-CAM FOLLOWER	1
23	092043	BEARING	*
22	092044	BEARING	*
21	095582	ASSEMBLY-CAM	1
20	091781	M4 X 10 LG. FLAT HD CAP SCREW	4
19	095563	DRIVE GEAR-CAM	1
18	**	DRIVESHAFT ASS'Y.	1
17	099477	SUPPORT ASS'Y NOP	1
16	095585	ASSEMBLY-PINION	1
15	092034	FLAT WASHER	1
14	**	SHAFT	1
13	095586	KEY	1
12	092035	FLAT WASHER	1
11	095574	ECCENTRIC	1

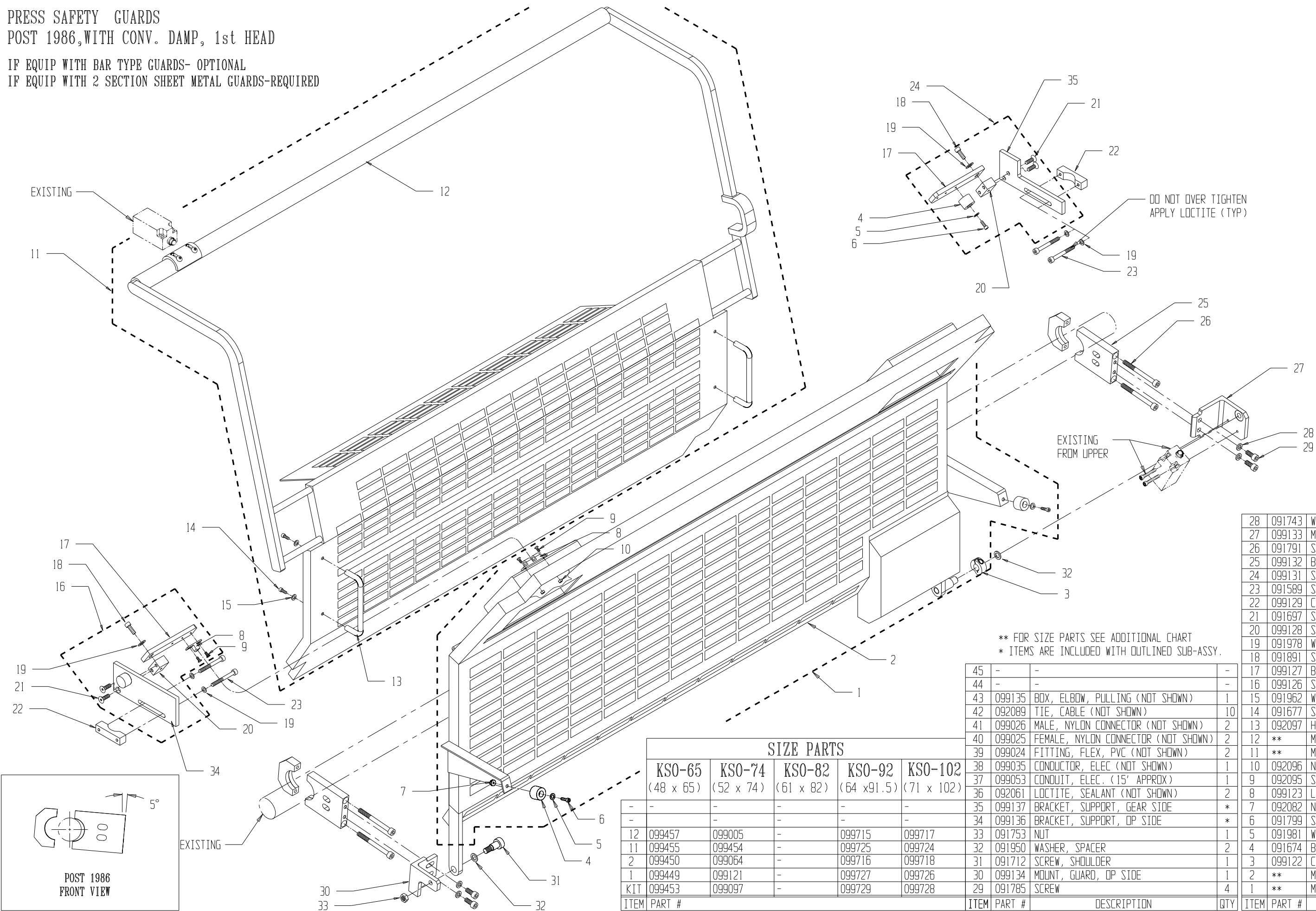
SIZE PARTS

	KSO-65 (48 x 65)	KSO-74 (52 x 74)	KSO-82 (61 x 82)	KSO-92 (64 x 91.5)	KSO-102 (71 x 102)
-	-	-	-	-	-
-	-	-	-	-	-
18	095705	099473	099885	099505	099467
-	-	-	-	-	-
14	095596	095577	099888	099508	099472
1	095593	095579	099889	099544	099419
	095711	095592	099883	099543	099222
ITEM	PART #				

10			
9			
8			
7			
6	099478	SUPPORT ASS'Y OP	1
5	092041	INTERNAL RETAINING RING	2
4	092033	FLAT WASHER	2
3	092045	SLEEVE BEARING	*
2	095584	ASEMBLY-INTERNAL GEAR	1
1	**	ASSEMBLY-ROLL	1
ITEM	PART NO.	DESCRIPTION	QTY.

PRESS SAFETY GUARDS
POST 1986, WITH CONV. DAMP, 1st HEAD

IF EQUIP WITH BAR TYPE GUARDS- OPTIONAL
 IF EQUIP WITH 2 SECTION SHEET METAL GUARDS-REQUIRED



** FOR SIZE PARTS SEE ADDITIONAL CHART
 * ITEMS ARE INCLUDED WITH OUTLINED SUB-ASSY.

SIZE PARTS					
	KSO-65 (48 x 65)	KSO-74 (52 x 74)	KSO-82 (61 x 82)	KSO-92 (64 x 91.5)	KSO-102 (71 x 102)
-	-	-	-	-	-
-	-	-	-	-	-
12	099457	099005	-	099715	099717
11	099455	099454	-	099725	099724
2	099450	099064	-	099716	099718
1	099449	099121	-	099727	099726
KIT	099453	099097	-	099729	099728

45	-	-	-
44	-	-	-
43	099135	BOX, ELBOW, PULLING (NOT SHOWN)	1
42	092089	TIE, CABLE (NOT SHOWN)	10
41	099026	MALE, NYLON CONNECTOR (NOT SHOWN)	2
40	099025	FEMALE, NYLON CONNECTOR (NOT SHOWN)	2
39	099024	FITTING, FLEX, PVC (NOT SHOWN)	2
38	099035	CONDUCTOR, ELEC (NOT SHOWN)	1
37	099053	CONDUIT, ELEC. (15' APPROX)	1
36	092061	LOCTITE, SEALANT (NOT SHOWN)	2
35	099137	BRACKET, SUPPORT, GEAR SIDE	*
34	099136	BRACKET, SUPPORT, OP SIDE	*
33	091753	NUT	1
32	091950	WASHER, SPACER	2
31	091712	SCREW, SHOULDER	1
30	099134	MOUNT, GUARD, OP SIDE	1
29	091785	SCREW	4

28	091743	WASHER	4
27	099133	MOUNT, GUARD, GEAR SIDE	1
26	091791	SCREW	4
25	099132	BRACKET, GUARD	2
24	099131	SUPPORT, SUB ASSY, GEAR SIDE	1
23	091589	SCREW	4
22	099129	CLAMP, GUARD SUPPORT	2
21	091697	SCREW, FLAT HEAD	*
20	099128	SUPPORT, LATCH BAR	*
19	091978	WASHER, FLAT	4*
18	091891	SCREW	*
17	099127	BAR, LATCH	*
16	099126	SUPPORT, SUB ASSY, OP SIDE	1
15	091962	WASHER, FLAT	*
14	091677	SCREW	*
13	092097	HANDLE	*
12	**	MAIN GUARD, UPPER	*
11	**	MAIN GUARD SUB ASSY, UPPER	1
10	092096	NUT	*
9	092095	SCREW, FLAT HEAD	*
8	099123	LATCH, GUARD	*
7	092082	NUT	*
6	091799	SCREW	*
5	091981	WASHER	*
4	091674	BUMPER, RUBBER	*
3	099122	CAM, LIMIT SWITCH	*
2	**	MAIN GUARD, LOWER	*
1	**	MAIN GUARD SUB ASSY, LOWER	1

POST 1986
 FRONT VIEW