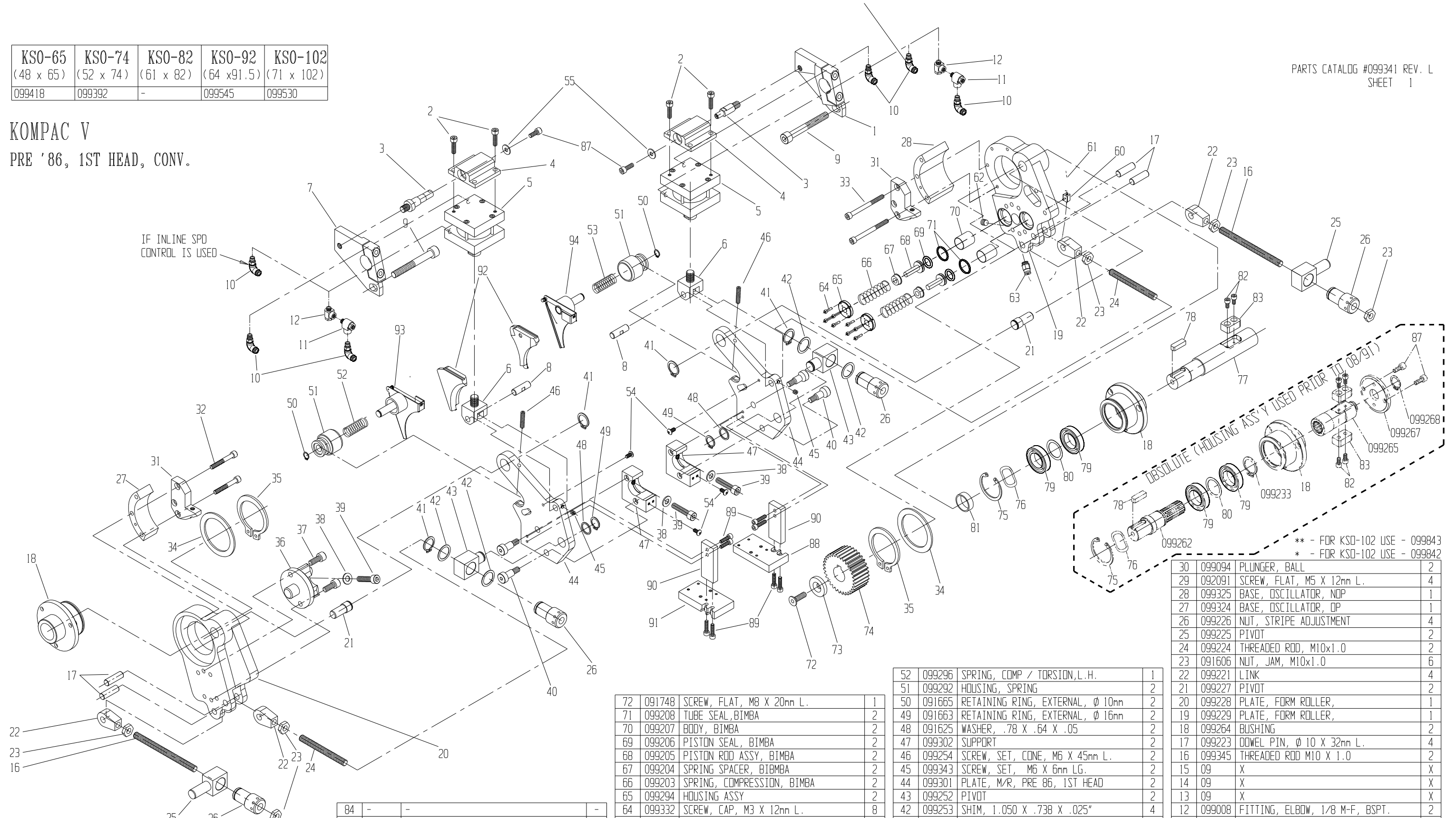


KSO-65 (48 x 65)	KSO-74 (52 x 74)	KSO-82 (61 x 82)	KSO-92 (64 x 91.5)	KSO-102 (71 x 102)
099418	099392	-	099545	099530

PARTS CATALOG #099341 REV. L  
SHEET 1

KOMPAC V  
PRE '86, 1ST HEAD, CONV.



94	099362	BACKING PLATE ASS'Y N.O.P.	1
93	099361	BACKING PLATE ASS'Y O.P.	1
92	099382	SEALS SET	1
91	099089	MOUNTING PLATE O.P.	1
90	099088	BAR	2
89	091696	SCREW, CAP, M5 X 20mm LG.	8
88	099119	MOUNTING PLATE N.O.P.	1
87	091785	SCREW, CAP, M6 X 14mm L.	2
86	-	-	-
85	-	-	-

84	-	-	-
83	099266	KEY	1
82	091757	SCREW, CAP, M5 X 10mm L.	2
81	099495	RETAINING RING, EXTERNAL, Ø 25mm	1
80	099232	SHIM, 1.300 X .988 X .015"	1
79	099263	BEARING, ROLLER, 42 X 25 X 9mm	2
78	099261	KEY	1
77	099492	SHAFT, DRIVE	1
76	099259	WAVE WASHER, Ø 42mm	1
75	099333	RETAINING RING, INTERNAL, Ø 42mm	1
74	099256	GEAR	1
73	099255	END WASHER	1

72	091748	SCREW, FLAT, M8 X 20mm L.	1
71	099208	TUBE SEAL, BIMBA	2
70	099207	BODY, BIMBA	2
69	099206	PISTON SEAL, BIMBA	2
68	099205	PISTON ROD ASSY, BIMBA	2
67	099204	SPRING SPACER, BIMBA	2
66	099203	SPRING, COMPRESSION, BIMBA	2
65	099294	HOUSING ASSY	2
64	099332	SCREW, CAP, M3 X 12mm L.	8
63	099380	FTG, CONN, ST, 1/8 NPT - 5/32 TUBE	1
62	099377	1/16 N.P.T. PLUG	1
61	099491	TUBE	1
60	099489	TUBE HOLDER	1
-	-	-	-
-	-	-	-
-	-	-	-
55	091961	WASHER FLAT	2
54	091768	SCREW CAP BUTTON HD. M10 X 10mm LG.	4
53	099291	SPRING, COMP / TORSION, R.H.	1

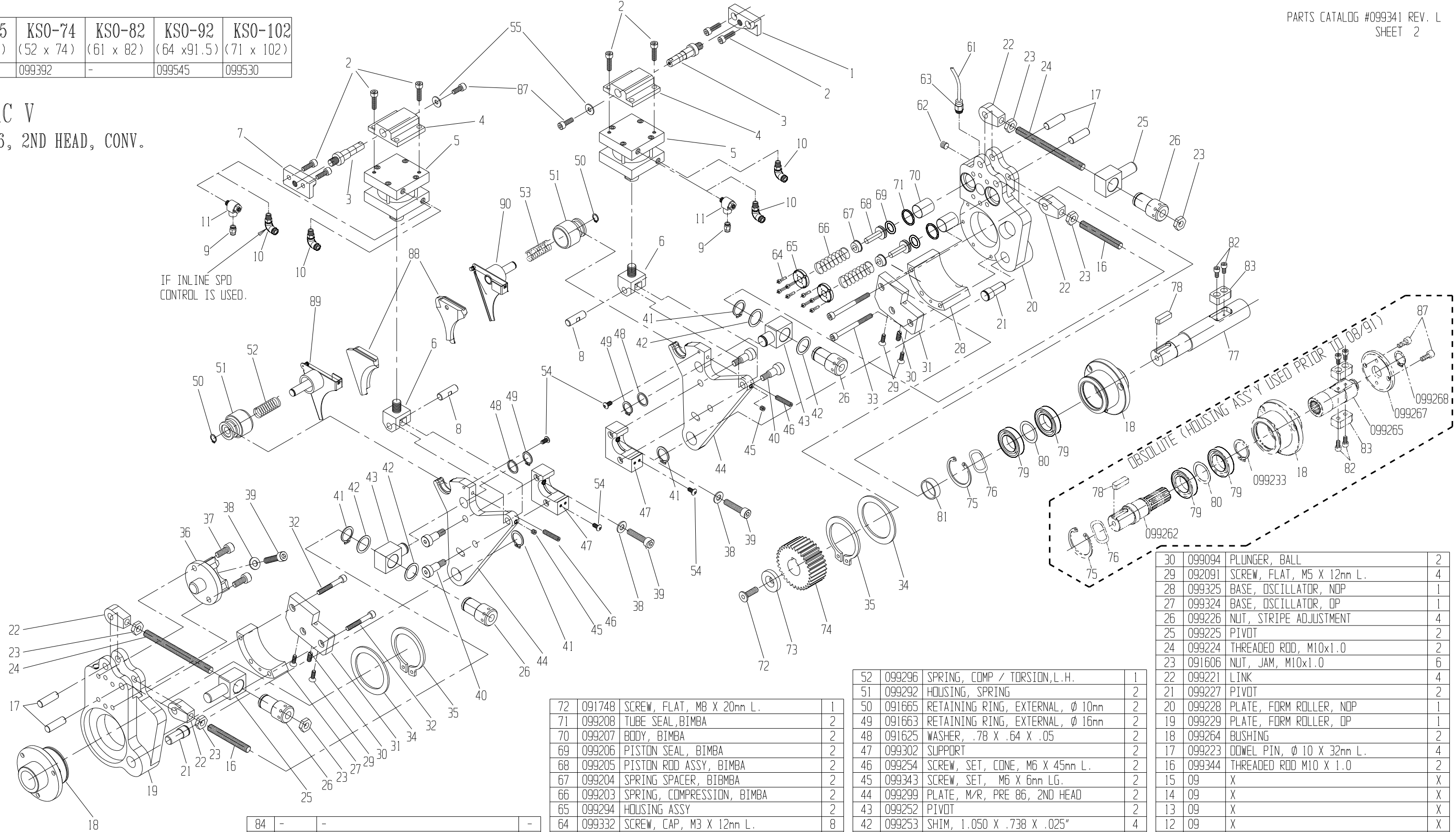
52	099296	SPRING, COMP / TORSION, L.H.	1
51	099292	HOUSING, SPRING	2
50	091665	RETAINING RING, EXTERNAL, Ø 10mm	2
49	091663	RETAINING RING, EXTERNAL, Ø 16mm	2
48	091625	WASHER, .78 X .64 X .05	2
47	099302	SUPPORT	2
46	099254	SCREW, SET, CONE, M6 X 45mm L.	2
45	099343	SCREW, SET, M6 X 6mm LG.	2
44	099301	PLATE, M/R, PRE 86, 1ST HEAD	2
43	099252	PIVOT	2
42	099253	SHIM, 1.050 X .738 X .025"	4
41	091664	RETAINING RING, EXTERNAL, Ø 20mm	4
40	099247	SCREW, SHOULDER Ø 10 X 16mm LG.	4
39	091892	SCREW, CAP, M8 X 35mm L.	3
38	099281	WASHER, M8	3
37	091758	SCREW, CAP, M8 X 20mm L.	2
36	099316	HANGER, FORM ROLLER	1
35	099257	RETAINING RING, EXTERNAL, Ø 55mm	2
34	099258	SPACER, BUSHING	2
33	099331	SCREW, CAP, M6 X 70mm L.	2
32	099329	SCREW, CAP, M6 X 45mm L.	2
31	099323	BRACKET, OSCILLATOR	2

30	099094	PLUNGER, BALL	2
29	092091	SCREW, FLAT, M5 X 12mm L.	4
28	099325	BASE, OSCILLATOR, NOP	1
27	099324	BASE, OSCILLATOR, OP	1
26	099226	NUT, STRIKE ADJUSTMENT	4
25	099225	PIVOT	2
24	099224	THREADED ROD, M10x1.0	2
23	091606	NUT, JAM, M10x1.0	6
22	099221	LINK	4
21	099227	PIVOT	2
20	099228	PLATE, FORM ROLLER	1
19	099229	PLATE, FORM ROLLER	1
18	099264	BUSHING	2
17	099223	DOWEL PIN, Ø 10 X 32mm L.	4
16	099345	THREADED ROD M10 X 1.0	2
15	09	X	X
14	09	X	X
13	09	X	X
12	099008	FITTING, ELBOW, 1/8 M-F, BSPT.	2
11	099006	VALVE, FLOW SPEED CONTROL	2
10	099013	FITTING, ELBOW, 1/8-6mm, UNI-THD.	4
9	099346	SCREW CAP M10 X 80mm LG.	2
8	099304	PIN	2
7	099311	SUPPORT **	1
6	099303	YUKE	2
5	099342	AIR CYLINDER	2
4	099305	BRACKET	2
3	099308	SUPPORT	2
2	091761	SCREW, CAP, M6 X 18mm LG.	4
1	099307	SUPPORT *	1

\*\* - FOR KSO-102 USE - 099843  
\* - FOR KSO-102 USE - 099842

KSO-65 (48 x 65)	KSO-74 (52 x 74)	KSO-82 (61 x 82)	KSO-92 (64 x 91.5)	KSO-102 (71 x 102)
099418	099392	-	099545	099530

KOMPAC V  
PRE '86, 2ND HEAD, CONV.



ITEM	PART #	DESCRIPTION	QTY
92	09	X	X
91	09	X	X
90	099362	BACKING PLATE ASS'Y N.O.P.	1
89	099361	BACKING PLATE ASS'Y O.P.	1
88	099382	SEALS SET	1
87	091785	SCREW, CAP, M6 X 14mm L.	2
86	-	-	-
85	-	-	-

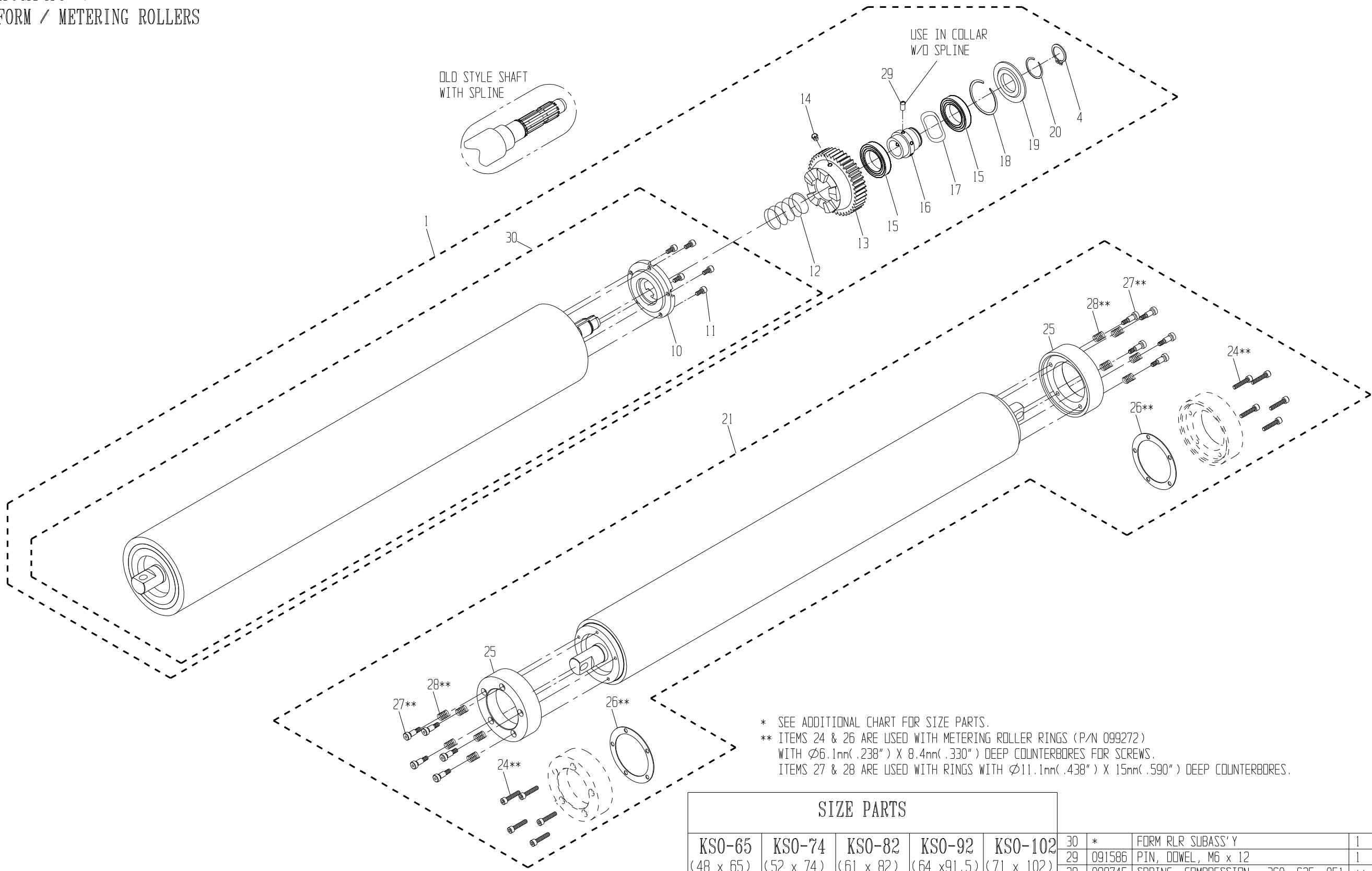
ITEM	PART #	DESCRIPTION	QTY
84	-	-	-
83	099266	KEY	1
82	091757	SCREW, CAP, M5 X 10mm L.	2
81	099495	SPACER	1
80	099232	SHIM, 1.300 X .988 X .015"	1
79	099263	BEARING, ROLLER, 42 X 25 X 9mm	2
78	099261	KEY	1
77	099492	SHAFT, DRIVE	1
76	099259	WAVE WASHER, Ø 42mm	1
75	099333	RETAINING RING, INTERNAL, Ø 42mm	1
74	099256	GEAR	1
73	099255	END WASHER	1

ITEM	PART #	DESCRIPTION	QTY
72	091748	SCREW, FLAT, M8 X 20mm L.	1
71	099208	TUBE SEAL, BIMBA	2
70	099207	BODY, BIMBA	2
69	099206	PISTON SEAL, BIMBA	2
68	099205	PISTON ROD ASSY, BIMBA	2
67	099204	SPRING SPACER, BIMBA	2
66	099203	SPRING, COMPRESSION, BIMBA	2
65	099294	HOUSING ASSY	2
64	099332	SCREW, CAP, M3 X 12mm L.	8
63	099380	FTG, CONN, ST, 1/8 NPT - 5/32 TUBE	1
62	099377	1/16 N.P.T. PLUG	1
61	099491	TUBING, 4MM	1
-	-	-	-
-	-	-	-
-	-	-	-
-	-	-	-
-	-	-	-
55	091961	WASHER FLAT	2
54	091768	SCREW CAP BUTTON HD.M5 X 10mm LG.	4
53	099291	SPRING, COMP / TORSION, R.H.	1

ITEM	PART #	DESCRIPTION	QTY
52	099296	SPRING, COMP / TORSION, L.H.	1
51	099292	HOUSING, SPRING	2
50	091665	RETAINING RING, EXTERNAL, Ø 10mm	2
49	091663	RETAINING RING, EXTERNAL, Ø 16mm	2
48	091625	WASHER, .78 X .64 X .05	2
47	099302	SUPPORT	2
46	099254	SCREW, SET, CONE, M6 X 45mm L.	2
45	099343	SCREW, SET, M6 X 6mm LG.	2
44	099299	PLATE, M/R, PRE 86, 2ND HEAD	2
43	099252	PIVOT	2
42	099253	SHIM, 1.050 X .738 X .025"	4
41	091664	RETAINING RING, EXTERNAL, Ø 20mm	4
40	099247	SCREW, SHOULDER Ø 10 X 16mm LG.	4
39	091892	SCREW, CAP, M8 X 35mm L.	3
38	099281	WASHER, M8	3
37	091758	SCREW, CAP, M8 X 20mm L.	2
36	099316	HANGER, FORM ROLLER	1
35	099257	RETAINING RING, EXTERNAL, Ø 55mm	2
34	099258	SPACER, BUSHING	2
33	099331	SCREW, CAP, M6 X 70mm L.	2
32	099329	SCREW, CAP, M6 X 45mm L.	2
31	099326	BRACKET, OSCILLATOR	2

ITEM	PART #	DESCRIPTION	QTY
30	099094	PLUNGER, BALL	2
29	092091	SCREW, FLAT, M5 X 12mm L.	4
28	099325	BASE, OSCILLATOR, NOP	1
27	099324	BASE, OSCILLATOR, OP	1
26	099226	NUT, STRIPE ADJUSTMENT	4
25	099225	PIVOT	2
24	099224	THREADED ROD, M10x1.0	2
23	091606	NUT, JAM, M10x1.0	6
22	099221	LINK	4
21	099227	PIVOT	2
20	099228	PLATE, FORM ROLLER, NOP	1
19	099229	PLATE, FORM ROLLER, OP	1
18	099264	BUSHING	2
17	099223	DOWEL PIN, Ø 10 X 32mm L.	4
16	099344	THREADED ROD M10 X 1.0	2
15	09	X	X
14	09	X	X
13	09	X	X
12	09	X	X
11	099006	VALVE, FLOW SPEED CONTROL	2
10	099013	FITTING, ELBOW, 1/8-6mm, UNI-THD.	2
9	099007	FITTING, 1/8-6mm, UNI-THD, SMC	2
8	099304	PIN	2
7	099309	SUPPORT	1
6	099303	YOKE	2
5	099342	AIR CYLINDER	2
4	099305	BRACKET	2
3	099308	SUPPORT	2
2	091761	SCREW, CAP, M6 X 18mm LG.	8
1	099306	SUPPORT	1

KOMPAC V  
FORM / METERING ROLLERS



\* SEE ADDITIONAL CHART FOR SIZE PARTS.  
 \*\* ITEMS 24 & 26 ARE USED WITH METERING ROLLER RINGS (P/N 099272)  
 WITH  $\phi 6.1\text{mm}$  (.238") X  $8.4\text{mm}$  (.330") DEEP COUNTERBORES FOR SCREWS.  
 ITEMS 27 & 28 ARE USED WITH RINGS WITH  $\phi 11.1\text{mm}$  (.438") X  $15\text{mm}$  (.590") DEEP COUNTERBORES.

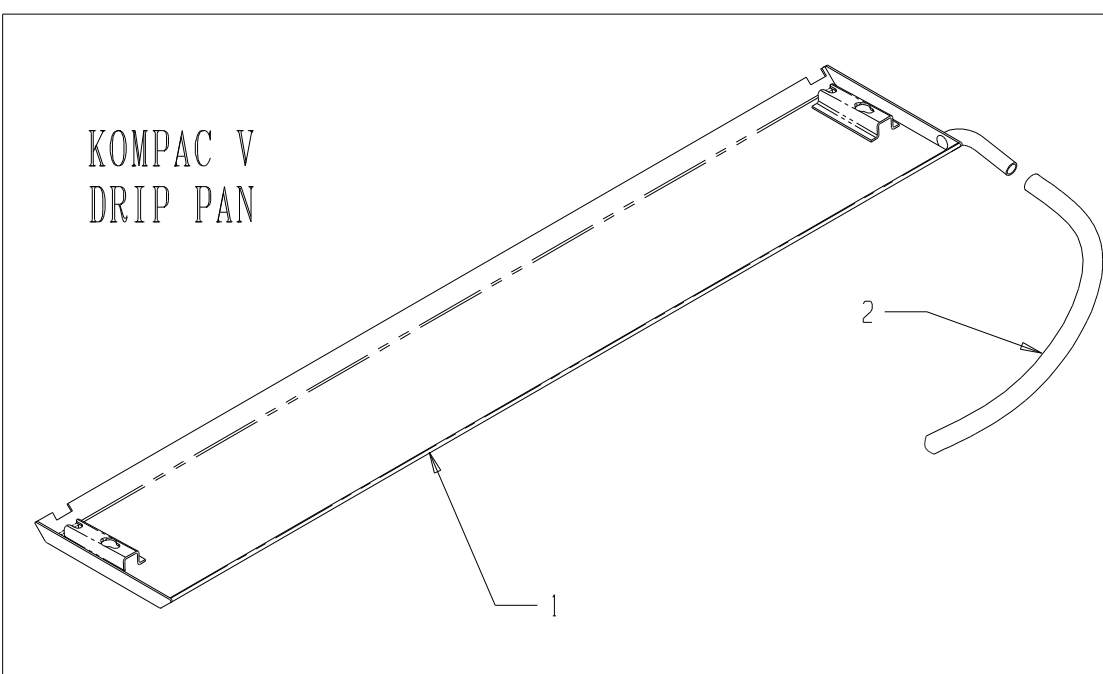
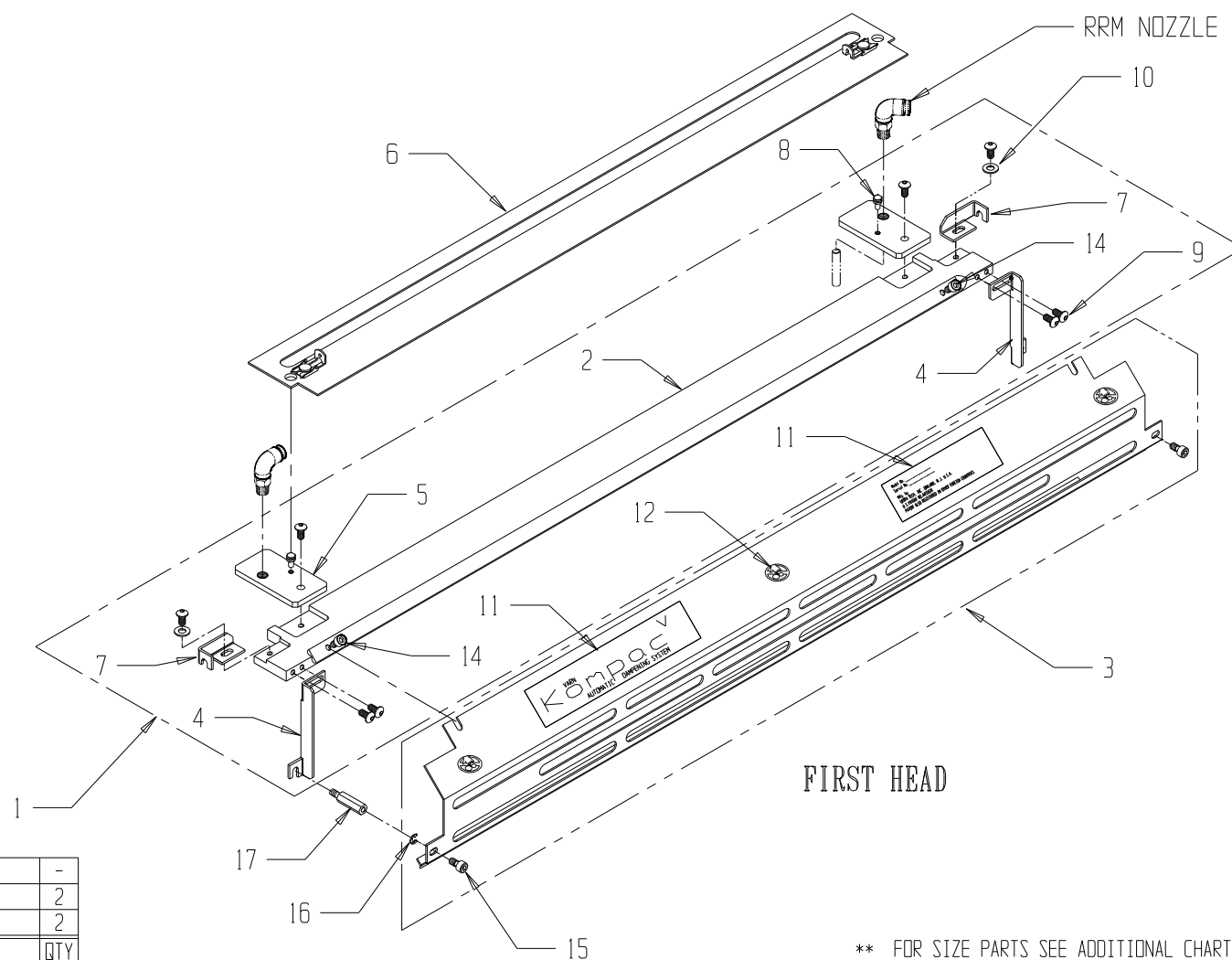
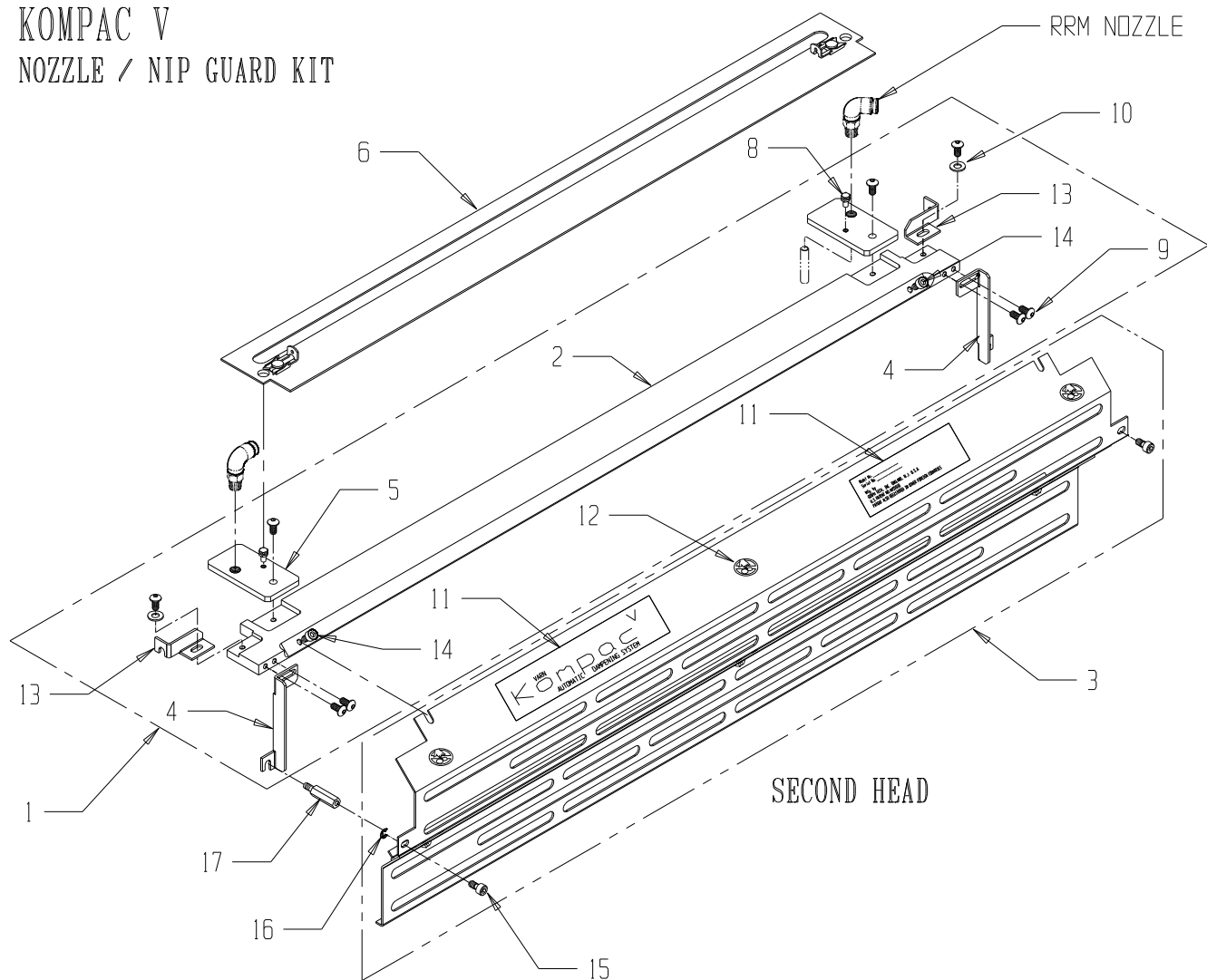
SIZE PARTS

	KSO-65 (48 x 65)	KSO-74 (52 x 74)	KSO-82 (61 x 82)	KSO-92 (64 x 91.5)	KSO-102 (71 x 102)
30	099856	099857	099875	099497	099858
21	099387	099279	099879	099509	099463
1	099383	099278	099874	099513	099459

20	099242	RET. RING, EXTERNAL, $\phi 1.062"$ , SPIRAL	1
19	099241	SHIELD	1
18	099239	RET. RING, INTERNAL, $\phi 1.875"$ , SPIRAL	1
17	099238	WAVE WASHER, 37mm O.D.	2
16	099244	COLLAR	1
15	099237	BEARING, BALL, 47 X 30 X 9mm	2
14	092048	GREASE FITTING	1
13	099236	GEAR, FORM ROLLER	1
12	099246	SPRING, COMPRESSION	1
11	091757	SCREW, CAP, M5 X 10mm L.	5
10	099245	HUB, ENGAGEMENT	1

ITEM	PART #	DESCRIPTION	QTY	ITEM	PART #	DESCRIPTION	QTY
	30	* FORM RLR SUBASS'Y	1				
	29	091586 PIN, DOWEL, M6 x 12	1				
	28	099745 SPRING, COMPRESSION, .360x.625x.051	**				
	27	091709 SCREW, SHOULDER, M6 X 12mm L.	**				
	26	099271 SHIM, LAMINATED	**				
	25	099272 RING, METERING ROLLER	2				
	24	099273 SCREW, CAP, M5 X 25mm L.	**	4	099243	RETAINING RING, EXTERNAL, $\phi 22\text{mm}$	1
	1	* ASSY, METERING ROLLER	-	1	*	ASSY, FORM ROLLER	-

KOMPAC V  
NOZZLE / NIP GUARD KIT



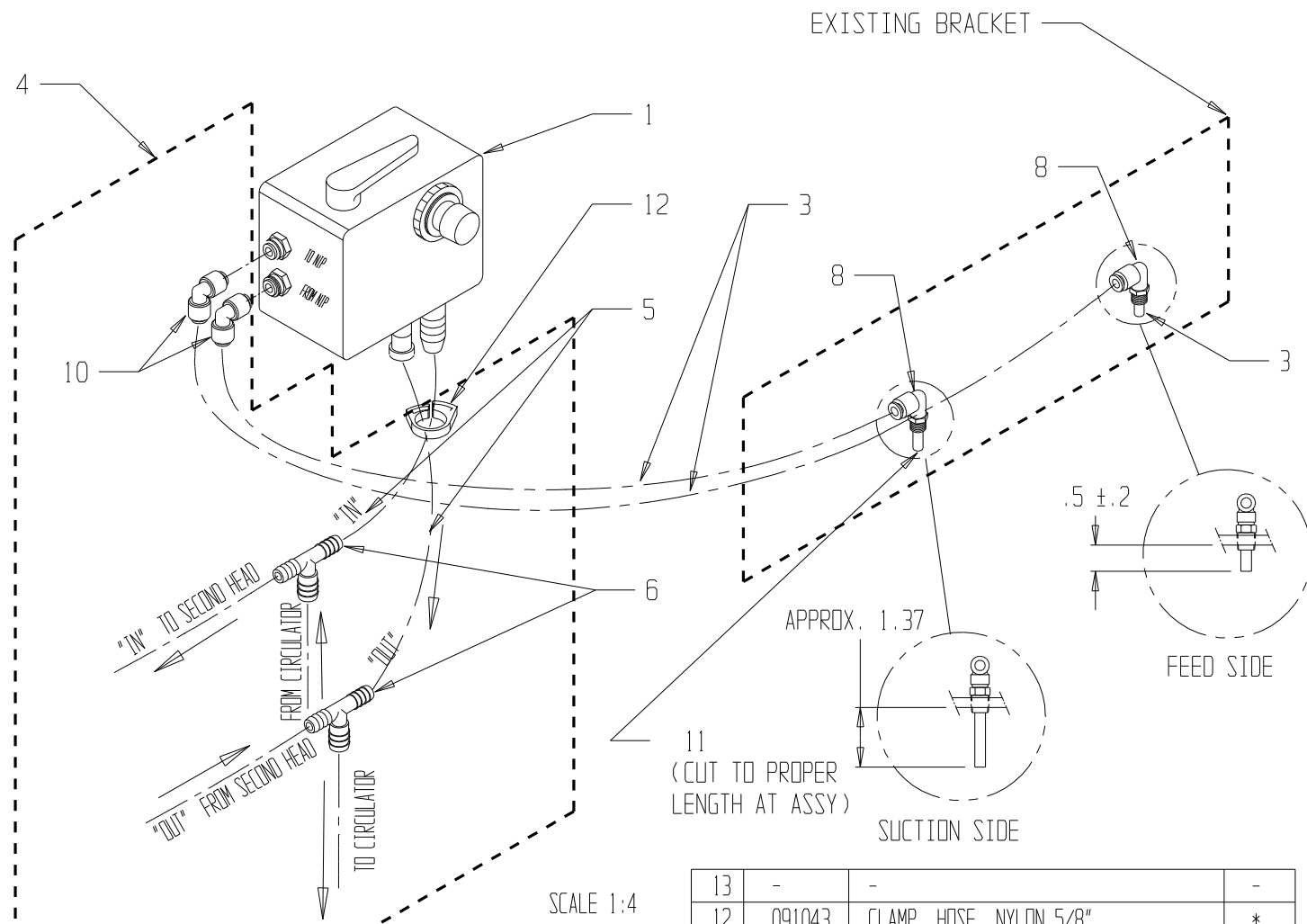
<b>KSO-102</b> (71 x 102)	3	-	-	-
	2	098011	TUBING, PLASTIC	2
	1	099611	PAN, DRIP	2
	ITEM	PART #	DESCRIPTION	QTY
<b>KSO-92</b> (64 x 91.5)	3	-	-	-
	2	098011	TUBING, PLASTIC	2
	1	099713	PAN, DRIP	2
	ITEM	PART #	DESCRIPTION	QTY
<b>KSO-82</b> (61 x 82)	3	-	-	-
	2	098011	TUBING, PLASTIC	2
	1	099897	PAN, DRIP	2
	ITEM	PART #	DESCRIPTION	QTY
<b>KSO-74</b> (52 x 74)	3	-	-	-
	2	098011	TUBING, PLASTIC	2
	1	099086	PAN, DRIP	2
	ITEM	PART #	DESCRIPTION	QTY
<b>KSO-65</b> (48 x 65)	3	-	-	-
	2	098011	TUBING, PLASTIC	2
	1	099195	PAN, DRIP	2
	ITEM	PART #	DESCRIPTION	QTY

\*\* FOR SIZE PARTS SEE ADDITIONAL CHART.  
\* ITEMS ARE INCLUDED WITH OUTLINED SUBASSEMBLY.

SIZE PARTS									
	KSO-65 (48 x 65)	KSO-74 (52 x 74)	KSO-82 (61 x 82)	KSO-92 (64 x 91.5)	KSO-102 (71 x 102)				
17	092103	092103	092103	092103	092103	SPACER, STAND OFF, M5	*		
16	091992	091992	091992	091992	091992	E-RING	*		
15	099168	099168	099168	099168	099168	SCREW, CAPTIVE, M5	*		
14	091757	091757	091757	091757	091757	SCREW, M5	*		
13	099071	099071	099071	099071	099071	TOP BAR SUPPORT, 2ND HD. SET	*		
12	092601	092601	092601	092601	092601	LABEL, LOGO, NIP POINT	*		
11	099065	099065	099065	099065	099065	LABEL, LOGO	*		
10	091978	091978	091978	091978	091978	WASHER, FLAT, M5	*		
9	091768	091768	091768	091768	091768	SCREW, BUTTON HD CAP SCREW, M5	*		
8	092073	092073	092073	092073	092073	STUD, RETAINING	*		
7	099068	099068	099068	099068	099068	TOP BAR SUPPORT, SET	*		
6	**	**	**	**	**	COVER, NIP	*		
5	099062	099062	099062	099062	099062	NOZZLE BKT	*		
4	099067	099067	099067	099067	099067	SIDE BAR SUPPORT, SET	*		
3	**	**	**	**	**	GUARD, FRONT	*		
2	**	**	**	**	**	BAR, GUARD	*		
1	**	**	**	**	**	NOZZLE/RLR BAR GUARD ASSY	*		
ITEM	PART NUMBERS (1ST & 2ND HEAD)					ITEM	PART #	DESCRIPTION	QTY

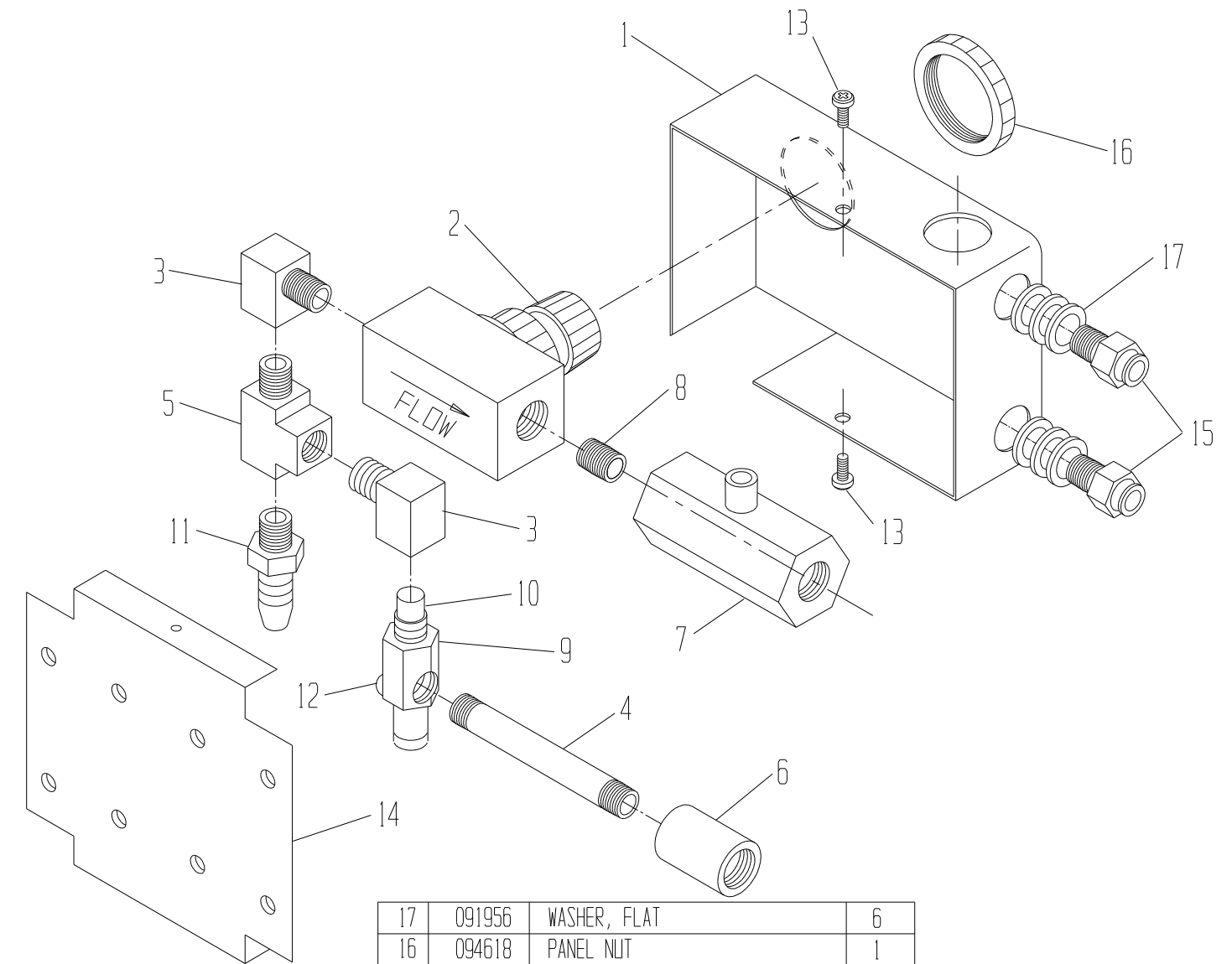
NOTES:

- 1. GIVEN QUANTITY IS PER (1) PRINTING HEAD
- 2. ITEMS MARKED \* ARE PART OF OUTLINED SUBASS'Y
- 2. ITEMS MARKED \*\* - FOR 2 COLOR PRESS.
- 3. ITEMS MARKED \*\*\* - FOR 1 COLOR PRESS.

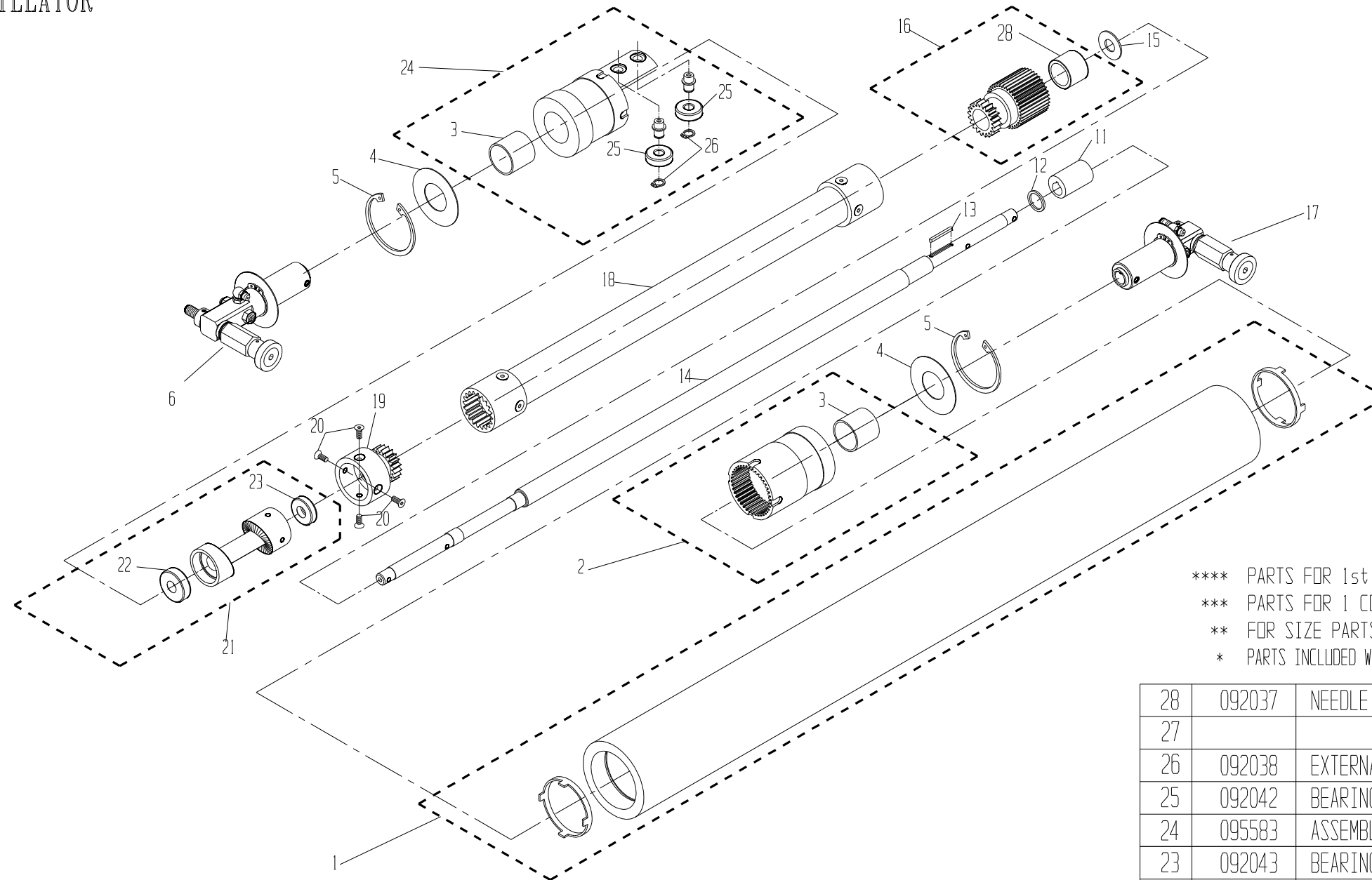


13	-	-	-
12	091043	CLAMP, HOSE, NYLON 5/8"	*
11	091078	1/4 O.D. TUBING, 2" LG	*
10	091082	ELBOW 1/4 O.D. TUBING	*
09			
08	094916	ELBOW	*
07	091063	CLAMP, HOSE, NYLON 3/4"	*
***	06	091066	REDUCER 1/2 X 3/8
**	06	091077	BARB TEE 1/2 X 3/8 X 3/8
05	091081	PVC FLEX. TUBING 3/8 I.D. X 5/8 O.D.	*
04	095924	HOSE KIT	1
03	091079	TUBING 1/4 O.D. X .170 I.D.(POLYETH)	*
02			
01	094730	RECIRCULATOR ASS'Y	1
ITEM	PART NO.	DESCRIPTION	QTY.

NOTE: USE THREAD SEALANT FELPRO #51370 OR EQUIVALENT ON ALL PIPE THREADED CONNECTIONS



17	091956	WASHER, FLAT	6
16	094618	PANEL NUT	1
15	095955	CONNECTOR 1/8 NPT x 1/4 HOSE.	2
14	094612	PLATE, MOUNTING	1
13	091907	SCREW #6-32 PAN HD. SELF-TAP	2
12	091824	SCREW #6-32 TRUSS HD.	1
11	091062	FITTING, 1/8 NPT x 3/8 BARB	1
10	095939	TIP, VACUUM	1
09	095938	BODY, VACUUM	1
08	095948	NIPPLE, CLOSE, 1/8 NPT	1
07	095949	BALL VALVE	1
06	094616	COUPLING, 1/8 NPT	1
05	094613	TEE, STREET, 1/8 NPT	1
04	094615	NIPPLE, LONG, 1/8 NPT	1
03	094614	ELBOW, STREET, 1/8 NPT	2
02	094617	NEEDLE VALVE	1
01	094611	ENCLOSURE	1
ITEM	PART NO.	DESCRIPTION	QTY.



\*\*\*\* PARTS FOR 1st HD. OF 2 COLOR PRESS.  
 \*\*\* PARTS FOR 1 COLOR PRESS OR 2nd HD. OF 2 COLOR PRESS.  
 \*\* FOR SIZE PARTS SEE ADDITIONAL CHART.  
 \* PARTS INCLUDED WITH OUTLINED SUBASSEMBLY

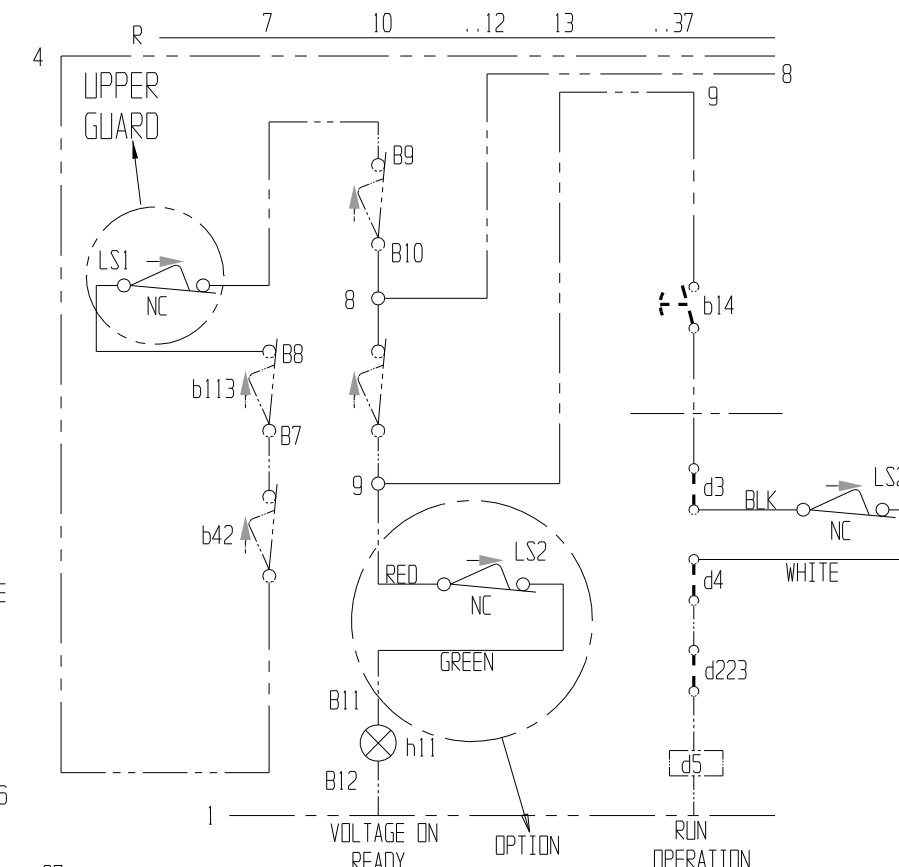
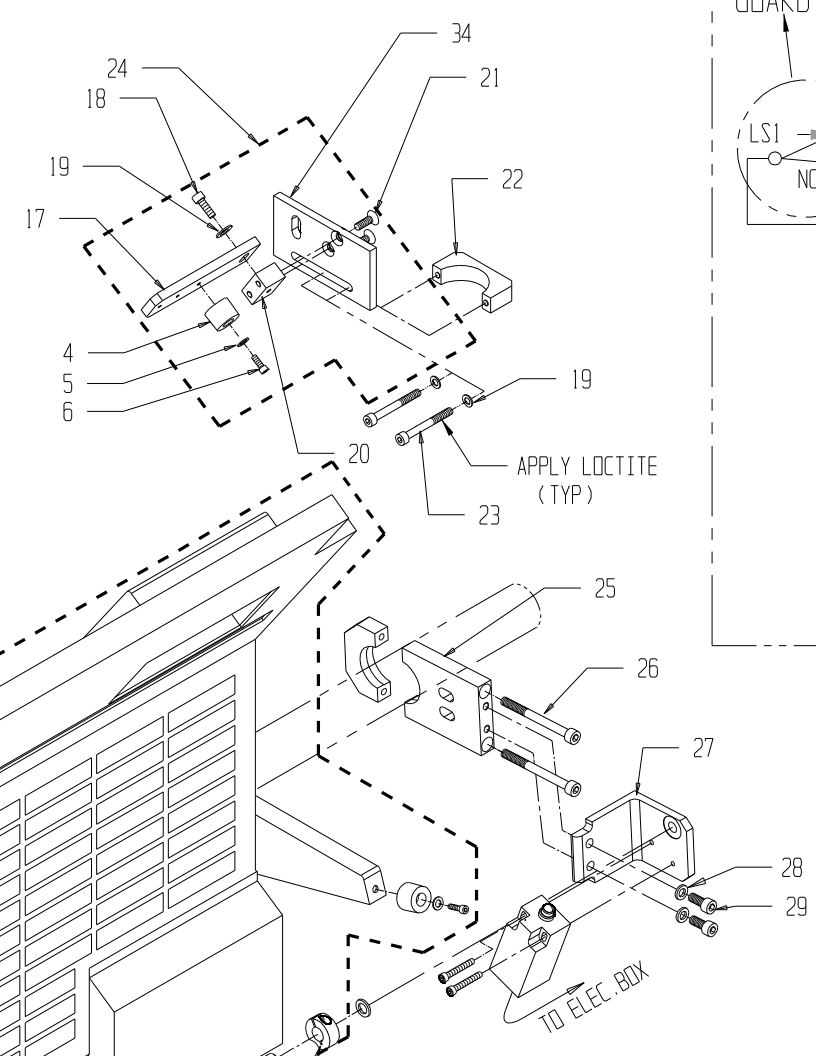
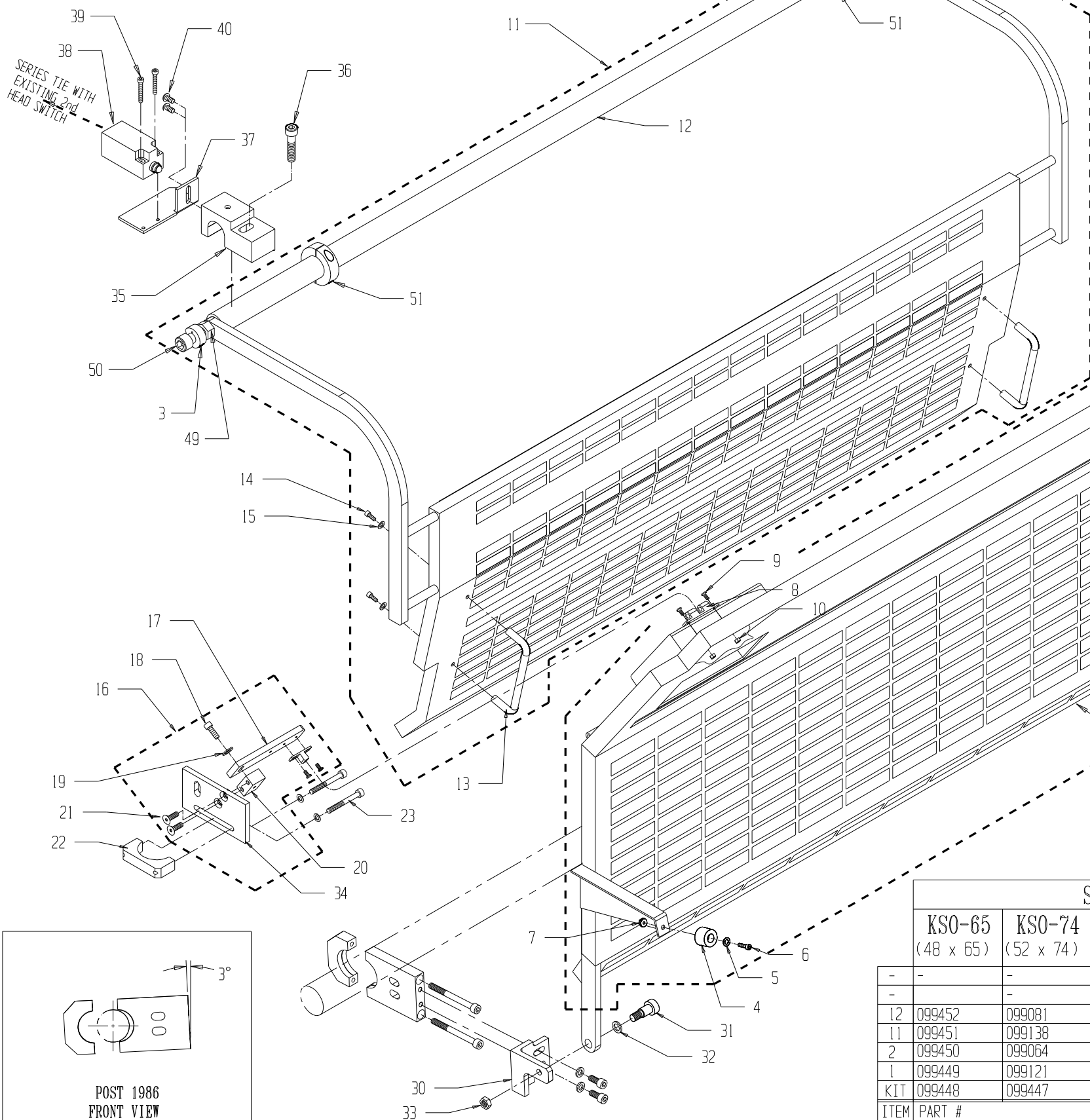
SIZE PARTS					
	KSO-65 (48 x 65)	KSO-74 (52 x 74)	KSO-82 (61 x 82)	KSO-92 (64 x 91.5)	KSO-102 (71 x 102)
-	-	-	-	-	-
-	-	-	-	-	-
18	095705	099473	099885	099505	099467
14	095596	095577	099888	099508	099472
1	095593	095579	099889	099544	099419
****	099485	099484	099884	099542	099541
***	095712	095588	099883	099543	099222
ITEM	PART #				

10				20	091781	M4 X 10 LG. FLAT HD CAP SCREW	4
9				19	095563	DRIVE GEAR-CAM	1
8				18	**	DRIVESHAFT ASS'Y.	1
7				17	099475	SUPPORT ASS'Y NOP ****	1
6	099476	SUPPORT ASS'Y OP ****	1	17	099477	SUPPORT ASS'Y NOP ***	1
6	099478	SUPPORT ASS'Y OP ***	1	16	095585	ASSEMBLY-PINION	1
5	092041	INTERNAL RETAINING RING	2	15	092034	FLAT WASHER	1
4	092033	FLAT WASHER	2	14	**	SHAFT	1
3	092045	SLEEVE BEARING	*	13	095586	KEY	1
2	095584	ASEMBLY-INTERNAL GEAR	1	12	092035	FLAT WASHER	1
1	**	ASSEMBLY-ROLL	1	11	095574	ECCENTRIC	1
ITEM	PART NO.	DESCRIPTION	QTY.	ITEM	PART NO.	DESCRIPTION	QTY.

# OPTIONAL PRESS SAFETY GUARDS, Pre '86, 1ST HEAD

NOTE;  
PROFESSIONAL ELECTRICIAN REQUIRED FOR  
INTERLOCK INSTALLATION

PARTS CATALOG #099341 REV. L  
SHEET 7



ELEC. SCHEMATIC FOR SAFETY GUARD INTERLOCK SWITCHES

\*\* FOR SIZE PARTS SEE ADDITIONAL CHART.  
\* ITEMS ARE INCLUDED WITH OUTLINED SUB-ASSY.

		SIZE PARTS				
		KSO-65 (48 x 65)	KSO-74 (52 x 74)	KSO-82 (61 x 82)	KSO-92 (64 x 91.5)	KSO-102 (71 x 102)
-	-	-	-	-	-	-
12	099452	099081	-	099714	099618	35
11	099451	099138	-	099738	099739	34
2	099450	099064	-	NOT AVAIL.	NOT AVAIL.	33
1	099449	099121	-	NOT AVAIL.	NOT AVAIL.	32
KIT	099448	099447	-	099740	099741	31
ITEM	PART #					ITEM PART # DESCRIPTION QTY

51	091595	COLLAR, SPLIT	*
50	091594	SCREW, SHCS	*
49	091980	NUT	*
48	091893	PLUG, DIL HOLE, M8 (NOT SHOWN)	3
47	092089	TIE, CABLE (NOT SHOWN)	10
46	099105	M8-1.25 HAND TAP (NOT SHOWN)	1
45	099024	FITTING, FLEX, PVC (NOT SHOWN)	3
44	099035	CONDUCTOR, ELEC. 20' (NOT SHOWN)	2
43	099034	CONDUIT, ELEC. 5' (NOT SHOWN)	2
42	092061	LOCTITE, SEALANT (NOT SHOWN)	2
41	099147	BKT, UPPER GUARD, GEAR SIDE	1
40	091768	SCREW, BKT	2
39	092101	SCREW, SWITCH	4
38	092098	SWITCH, LIMIT	2
37	099146	BKT, LIMIT SWITCH	1
36	091892	SCREW, BKT	2
35	099145	BKT, UPPER GUARD, OP SIDE	1
34	099144	BKT, SUPPORT	*
33	091753	NUT	1
32	091950	WASHER, SPACER	2
31	091712	SCREW, SHOULDER	1

30	099134	MOUNT, GUARD, OP SIDE	1
29	091785	SCREW	4
28	091743	WASHER	4
27	099133	MOUNT, GUARD, GEAR SIDE	1
26	091791	SCREW	4
25	099132	BRACKET, GUARD	2
24	099143	SUPPORT, SUB ASSY, GEAR SIDE	1
23	091589	SCREW	4
22	099142	CLAMP, GUARD SUPPORT	2
21	091697	SCREW, FLAT HEAD	*
20	099128	SUPPORT, LATCH BAR	*
19	091978	WASHER, FLAT	4*
18	091891	SCREW	*
17	099127	BAR, LATCH	*
16	099141	SUPPORT, SUB ASSY, OP SIDE	1
15	091962	WASHER, FLAT	*
14	091677	SCREW	*
13	092097	HANDLE	*
12	**	MAIN GUARD, UPPER	*
11	**	MAIN GUARD SUB ASSY, UPPER	1
10	092096	NUT	*
9	092095	SCREW, FLAT HEAD	*
8	099123	LATCH, GUARD	*
7	092082	NUT	*
6	091799	SCREW	*
5	091981	WASHER	*
4	091674	BUMPER, RUBBER	*
3	099122	CAM, LIMIT SWITCH	*
2	**	MAIN GUARD, LOWER	*
1	**	MAIN GUARD SUB ASSY, LOWER	1
ITEM	PART #	DESCRIPTION	QTY